

Recombinant Human Ubiquitin-conjugating enzyme E2 J1/UBE2J1(1-282) protein

Catalog No.: RP10049LQ **Recombinant**

Sequence Information

Species	Gene ID	Swiss Prot
Human	51465	Q9Y385

Tags
His Tag

Synonyms
UBE2J1;CGI-76;HSPC153;HSPC205;HSU93243;NCUBE-1;NCUBE1;UBC6;UBC6E;Ub c6p

Product Information

Source	Purification
<i>E. coli</i>	~80% by SDS-PAGE

Endotoxin

Formulation
20 mM Tris, 150 mM NaCl, 2 mM β ME, 10% Glycerol

Reconstitution

Background

UbE2J1 is an E2 enzyme, which is part of the E1, E2, and E3 cascade responsible for ubiquitination of protein substrates. UBE2J1 is a membrane protein localized on the endoplasmic reticulum (ER), where it catalyzes ubiquitination of misfolded membrane proteins with other ubiquitination components. UbE2J1(1-282) lacks the C-terminal membrane-localization region, but still possesses Ub conjugating activity.

Basic Information

Description

Bio-Activity

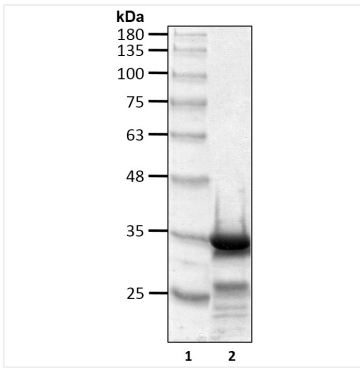
Storage

This product is stable at $\leq -70^{\circ}\text{C}$ for up to 6 months from the date of receipt. For optimal storage, aliquot into smaller quantities after centrifugation and store at recommended temperature. Avoid repeated freeze/thaw cycles.

Contact

		400-999-6126
		cn.market@abclonal.com.cn
		www.abclonal.com.cn

Validation Data



Recombinant human Ubiquitin-conjugating enzyme E2 J1/UBE2J1(1-282) protein was determined by SDS-PAGE with Coomassie Blue.