

Recombinant Human Ubiquitin/ISG15-conjugating enzyme E2 L6/UBE2L6 protein

Catalog No.: RP10051LQ **Recombinant**

Sequence Information

Species	Gene ID	Swiss Prot
Human	9246	O14933

Tags
His Tag

Synonyms
UBE2L6;RIG-B;UBCH8

Product Information

Source	Purification
<i>E. coli</i>	~95% by SDS-PAGE

Endotoxin

Formulation
20 mM Tris, 150 mM NaCl, 2 mM βME,
10% Glycerol

Reconstitution

Background

Ube2L6 is an E2 enzyme, which is part of the E1, E2, and E3 cascade responsible for ubiquitination of protein substrates. One function of this E2 is that it is involved in ubiquitination and degradation of a neuron – specific protein called syntaxin 1. Recently Ube2L6 has been shown to work with the Isg15 E1, Ube1L, to conjugate Isg15 to substrates as well.

Basic Information

Description

Bio-Activity

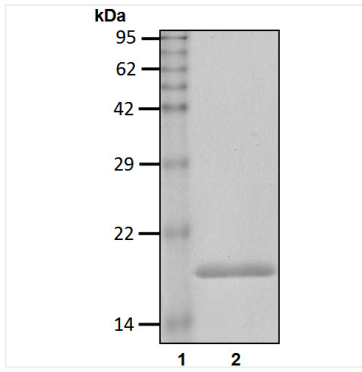
Storage

This product is stable at $\leq -70^{\circ}\text{C}$ for up to 6 months from the date of receipt. For optimal storage, aliquot into smaller quantities after centrifugation and store at recommended temperature. Avoid repeated freeze/thaw cycles.

Contact

		400-999-6126
		cn.market@abclonal.com.cn
		www.abclonal.com.cn

Validation Data



Recombinant human Ubiquitin/ISG15-conjugating enzyme E2 L6/UBE2L6 protein was determined by SDS-PAGE with Coomassie Blue.