

Recombinant Human Ubiquitin-conjugating enzyme E2 R2/UBE2R2 protein

Catalog No.: RP10056LQ **Recombinant**

Sequence Information

Species	Gene ID	Swiss Prot
Human	54926	Q712K3

Tags
His Tag

Synonyms
UBE2R2;CDC34B;E2-CDC34B;UBC3B

Product Information

Source	Purification
<i>E. coli</i>	~90% by SDS-PAGE

Endotoxin

Formulation
20 mM Tris, 150 mM NaCl, 2 mM β ME,
10% Glycerol

Reconstitution

Background

Ube2R2 is an E2 enzyme, which is part of the E1, E2, and E3 cascade responsible for ubiquitination of protein substrates. Ube2R2 is phosphorylated by CK2 before it can bind to SCF (Skp1, Cul1, F-box) subunit β -TrCP. This E2 catalyzes K48 - linked Ub chains, which when conjugated to substrates, are targeted to the 26S proteasome for degradation.

Basic Information

Description

Bio-Activity

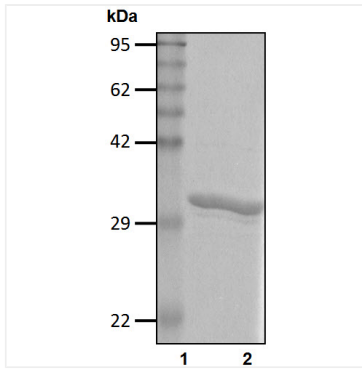
Storage

This product is stable at $\leq -70^{\circ}\text{C}$ for up to 6 months from the date of receipt. For optimal storage, aliquot into smaller quantities after centrifugation and store at recommended temperature. Avoid repeated freeze/thaw cycles.

Contact

		400-999-6126
		cn.market@abclonal.com.cn
		www.abclonal.com.cn

Validation Data



Recombinant human Ubiquitin-conjugating enzyme E2 R2/UBE2R2 protein was determined by SDS-PAGE with Coomassie Blue.