

Recombinant Human Ubiquitin-conjugating enzyme E2 W/UBE2W protein

Catalog No.: RP10061LQ **Recombinant**

Sequence Information

Species	Gene ID	Swiss Prot
Human	55284	Q96B02

Tags
His Tag

Synonyms
UBE2W;UBC-16;UBC16

Product Information

Source	Purification
<i>E. coli</i>	~90% by SDS-PAGE

Endotoxin

Formulation
20 mM Tris, 150 mM NaCl, 2 mM β ME,
10% Glycerol

Reconstitution

Background

Ube2W is an E2 enzyme, which is part of the E1, E2, and E3 cascade responsible for ubiquitination of protein substrates. It has been shown to catalyze monoubiquitination of Fanconi anemia complementation group L (FANCL), an E3 Ub ligase. The FANCL is part of a complex that is able to monoubiquitinate FANCD2 during DNA repair. Ube2W can also interact with the RING domain of the breast and ovarian cancer susceptibility protein called BRCA1.

Basic Information

Description

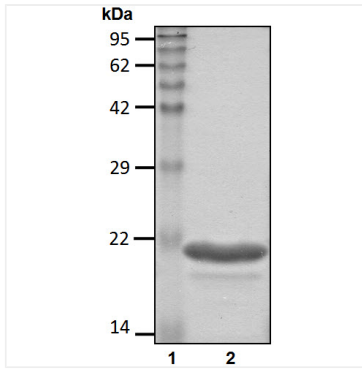
Bio-Activity

Storage
Store at -70°C. This product is stable at $\leq -70^\circ\text{C}$ for up to 1 year from the date of receipt. For optimal storage, aliquot into smaller quantities after centrifugation and store at recommended temperature. Avoid repeated freeze-thaw cycles. Avoid repeated freeze/thaw cycles.

Contact

		400-999-6126
		cn.market@abclonal.com.cn
		www.abclonal.com.cn

Validation Data



Recombinant human Ubiquitin-conjugating enzyme E2 W/UBE2W protein was determined by SDS-PAGE with Coomassie Blue.