

Recombinant Human SUMO-1 protein

Catalog No.: RP10166LQ **Recombinant**

Sequence Information

Species	Gene ID	Swiss Prot
Human	7341	P63165

Tags
No Tag

Synonyms

DAP1;GMP1;OFC10;PIC1;SENP2;SMT3;SMT3C;SMT3H3;UBL1;SUMO1;SUMO-1;DAP1; GMP1; OFC10; PIC1; SENP2; SMT3; SMT3C; SMT3H3; UBL1; small ubiquitin-like modifier 1

Product Information

Source	Purification
<i>E. coli</i>	~95% by SDS-PAGE

Endotoxin

Formulation

20 mM Tris, 150 mM NaCl, 2 mM βME, 10% Glycerol

Reconstitution

Background

SUMO (small Ub-related modifier) is a Ub-like protein. Three types of SUMO are most commonly studied, SUMO 1, SUMO 2, and SUMO 3. SUMO 2 and SUMO 3 are almost identical isoforms and thus share many functions. Like Ub, SUMO can be conjugated to its target proteins as a polymeric chain. However, SUMO 1 forms chains inefficiently as compared to SUMO 2 and SUMO 3. SUMO is conjugated to target proteins by the E1 (SAE1/SAE2), E2 (Ube2I or Ubc9), E3 (RanBP2/Nup358, amongst others). Protein sumoylation is involved in many cellular processes including gene transcription.

Basic Information

Description

Bio-Activity

Storage

This product is stable at ≤ -70°C for up to 6 months from the date of receipt. For optimal storage, aliquot into smaller quantities after centrifugation and store at recommended temperature. Avoid repeated freeze/thaw cycles.

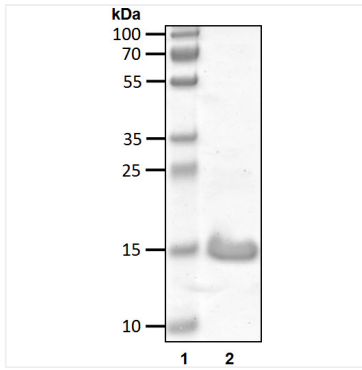
Contact

 | 400-999-6126

 | cn.market@abclonal.com.cn

 | www.abclonal.com.cn

Validation Data



Recombinant human SUMO-1 protein was determined by SDS-PAGE with Coomassie Blue.