

Chloroquine(氯喹)(Toll样受体拮抗剂)

Catalog No.: RPM0025

Sequence Information

Species **Gene ID** **Swiss Prot**
19851

Tags

□□

Synonyms

CQ; 氯喹

Product Information

Source **Purification**
C₁₈H₂₆ClN₃ > 98%

Calculated MW **Observed MW**
319.87

Endotoxin

Formulation

10% DMSO+40% PEG300+5% Tween
80+45% Saline: 5.25 mg/mL (16.42 mM),
Suspension. Working solution is
recommended to be prepared and used
immediately. DMSO: 45 mg/mL (140.68
mM) Ethanol: 100 mg/mL (312.63 mM),
Sonication is recommended.

Reconstitution

Contact

☎ | 400-999-6126

✉ | cn.market@abclonal.com.cn

🌐 | www.abclonal.com.cn

Background

氯喹 Toll 样受体拮抗剂

Basic Information

Description

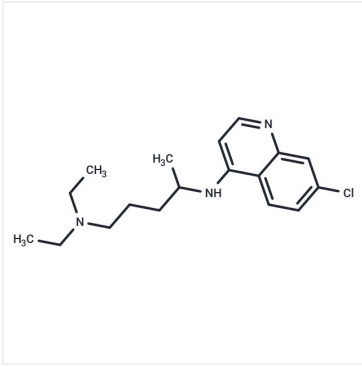
Chloroquine(氯喹)(Toll样受体拮抗剂) 氯喹 Toll 样受体拮抗剂Chloroquine 氯喹
氯喹Chloroquine 氯喹 SARS-CoV-2 (COVID-19) 氯喹 HIV-1 氯喹

Bio-Activity

Storage

Store at -20°C. This product is stable at -20°C up to 3 years from the date of receipt .
After reconstitution, the solution is stable at -20°C for 6 months, at -80°C for up to 1
year.
Avoid repeated freeze/thaw cycles.

Validation Data



Chemical structure of Chloroquine (Tolluquinolone), CAS No. 19851