

Recombinant Human IgG2A Protein

Catalog No.: RPT0005 **Recombinant**

Sequence Information

Species	Gene ID	Swiss Prot
Human	3501	P01859

Tags
NO-tag

Synonyms
IGHG2;Immunoglobulin heavy constant gamma 2;IgG2

Product Information

Source	Purification
HEK293 cells	> 97% by SDS-PAGE.

Calculated MW **Observed MW**

Endotoxin
<0.1EU/μg

Formulation
Lyophilized from a 0.22 μm filtered solution of PBS, pH 7.4.

Reconstitution
Centrifuge the vial before opening. Reconstitute to a concentration of 0.1-0.5 mg/mL in sterile distilled water. Avoid vortex or vigorously pipetting the protein. For long term storage, it is recommended to add a carrier protein or stabilizer (e.g. 0.1% BSA, 5% HSA, 10% FBS or 5% Trehalose), and aliquot the reconstituted protein solution to minimize free-thaw cycles.

Contact

☎	400-999-6126
✉	cn.market@abclonal.com.cn
🌐	www.abclonal.com.cn

Background

Constant region of immunoglobulin heavy chains. Immunoglobulins, also known as antibodies, are membrane-bound or secreted glycoproteins produced by B lymphocytes. In the recognition phase of humoral immunity, the membrane-bound immunoglobulins serve as receptors which, upon binding of a specific antigen, trigger the clonal expansion and differentiation of B lymphocytes into immunoglobulin-secreting plasma cells. Secreted immunoglobulins mediate the effector phase of humoral immunity, which results in the elimination of bound antigens

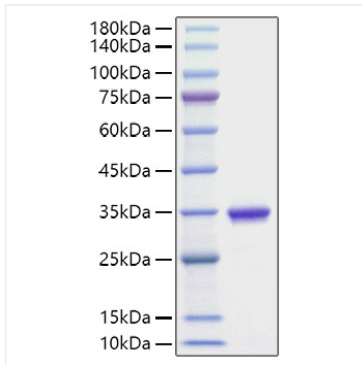
Basic Information

Description
Recombinant Human IgG2A Protein is produced by HEK293 cells expression system. The target protein is expressed with sequence (Glu99-Lys326) of human IgG2A (Accession #) fused with and NO-tag at the C-terminus.

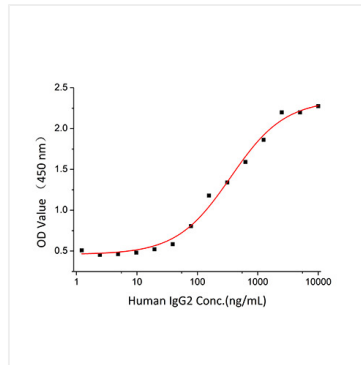
Bio-Activity
Measured by its binding ability in a functional ELISA. Immobilized Human CD32a (Catalog: RP00081) at 2 μg/mL (100 μL/well) can bind Human IgG2 (Catalog: RPT0005) with a linear range of 1.2-338 ng/mL.

Storage
Store at -20°C. Store the lyophilized protein at -20°C to -80 °C up to 1 year from the date of receipt. After reconstitution, the protein solution is stable at -20°C for 3 months, at 2-8°C for up to 1 week. Avoid repeated freeze/thaw cycles.

Validation Data



Recombinant Human IgG2A Protein was determined by SDS-PAGE with Coomassie Blue, showing a band at 25-35 kDa.



Immobilized Human CD32a (Catalog: RP00081) at 2 μ g/mL (100 μ L/well) can bind Human IgG2 (Catalog: RPT0005) with a linear range of 1.2-338 ng/mL.