

Recombinant Streptococcus SPG/IgG-binding protein G Protein

Catalog No.: RPT0009LQ **Recombinant**

Sequence Information

Species	Gene ID	Swiss Prot
Streptococcus		P19909

Tags

C-His

Synonyms

Immunoglobulin G-binding protein G;
IgG-binding protein G; SPG

Product Information

Source	Purification
<i>E. coli</i>	> 95% by SDS-PAGE.

Endotoxin

< 1.0 EU/μg of the protein by LAL method.

Formulation

Supplied as a 0.22 μm filtered solution in PBS, pH 7.4.

Reconstitution

Background

Protein G is a bacterial protein derived from the cell wall of certain strains of b-hemolytic Streptococci. It binds with high affinity to the Fc portion of various classes and subclasses of immunoglobulins from a variety of species. Protein G binds to all IgG subclasses from human, mouse and rat species. It also binds to total IgG from guinea pig, rabbit, goat, cow, sheep, and horse. Protein G binds preferentially to the Fc portion of IgG, but can also bind to the Fab region, making it useful for purification of F(ab') fragments of IgG. Due to its affinity for the Fc region of many mammalian immunoglobulins, protein G is considered a universal reagent in biochemistry and immunology.

Basic Information

Description

Bio-Activity

Storage

This product is stable at ≤ -70°C for up to 1 year from the date of receipt. For optimal storage, aliquot into smaller quantities after centrifugation and store at recommended temperature. Avoid repeated freeze/thaw cycles.

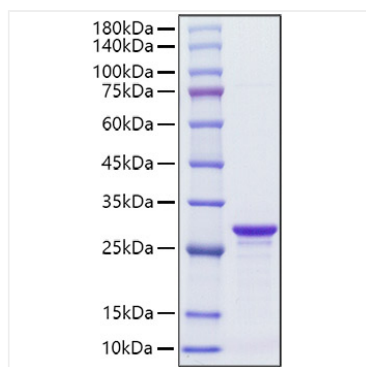
Contact

☎ | 400-999-6126

✉ | cn.market@abclonal.com.cn

🌐 | www.abclonal.com.cn

Validation Data



Recombinant Streptococcus SPG/IgG-binding protein G Protein was determined by SDS-PAGE with Coomassie Blue, showing a band at 25-35 kDa.