

Recombinant Yeast sumo Protein

Catalog No.: RPT0010 **Recombinant**

Sequence Information

Species	Gene ID	Swiss Prot
Yeast	852122	Q12306

Tags

No-tag

Synonyms

sumo

Product Information

Source	Purification
<i>E. coli</i>	

Endotoxin

<0.1EU/μg

Formulation

Lyophilized from a 0.22 μm filtered solution of PBS, pH 7.4.

Reconstitution

Centrifuge the vial before opening.
Reconstitute to a concentration of 0.1-0.5 mg/mL in sterile distilled water.
Avoid vortex or vigorously pipetting the protein. For long term storage, it is recommended to add a carrier protein or stabilizer (e.g. 0.1% BSA, 5% HSA, 10% FBS or 5% Trehalose), and aliquot the reconstituted protein solution to minimize freeze-thaw cycles.

Background

Basic Information

Description

Recombinant Yeast sumo Protein is produced by *E. coli* expression system. The target protein is expressed with sequence (Met1-Gly98) of yeast sumo (Accession #NP_010798.1) fused with no additional amino acid.

Bio-Activity

Storage

Store the lyophilized protein at -20°C to -80°C for 12 months.

After reconstitution, the protein solution is stable at -20°C for 3 months, at 2-8°C for up to 1 week.

Avoid repeated freeze/thaw cycles.

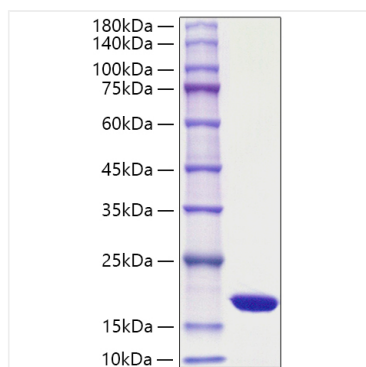
Contact

☎ | 400-999-6126

✉ | cn.market@abclonal.com.cn

🌐 | www.abclonal.com.cn

Validation Data



Recombinant Yeast sumo Protein was determined by SDS-PAGE with Coomassie Blue, showing a band at 18 kDa.