

Recombinant Mouse IgE Protein

Catalog No.: RPT0013 **Recombinant**

Sequence Information

Species	Gene ID	Swiss Prot
Mouse		P06336

Tags

C-His

Synonyms

IgE

Product Information

Source	Purification
HEK293 cells	

Endotoxin

< 0.1 EU/μg

Formulation

Lyophilized from a 0.22 μm filtered solution of PBS, pH 7.4.

Reconstitution

Centrifuge the vial before opening. Reconstitute to a concentration of 0.1-0.5 mg/mL in sterile distilled water. Avoid vortex or vigorously pipetting the protein. For long term storage, it is recommended to add a carrier protein or stabilizer (e.g. 0.1% BSA, 5% HSA, 10% FBS or 5% Trehalose), and aliquot the reconstituted protein solution to minimize freeze-thaw cycles.

Contact

 | 400-999-6126

 | cn.market@abclonal.com.cn

 | www.abclonal.com.cn

Background

As one of the five designated immunoglobulin isotypes, immunoglobulin E (IgE) plays a major role in atopic conditions by inducing immediate hypersensitivity reactions. IgE also contributes significantly to the body's immune response to parasitic infections. IgE antibodies are predominantly found in the tissues, firmly attached to effector cells, such as mast cells and basophils, by high-affinity IgE Fc receptor (Fc epsilon RI) and low-affinity IgE receptor (Fc epsilon RII).

Basic Information

Description

Recombinant Mouse IgE Protein is produced by HEK293 cells expression system. The target protein is expressed with sequence (Pro50-Lys388) of mouse IgE (Accession #) fused with and 6xHis tag at the C-terminus.

Bio-Activity

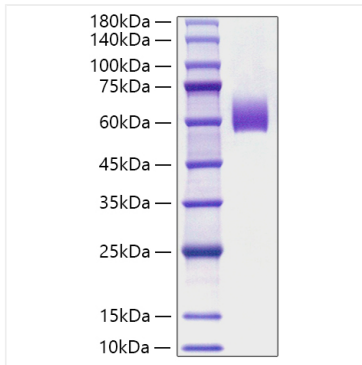
Storage

Store the lyophilized protein at -20°C to -80°C for 12 months.

After reconstitution, the protein solution is stable at -20°C for 3 months, at 2-8°C for up to 1 week.

Avoid repeated freeze/thaw cycles.

Validation Data



Recombinant Mouse IgE Protein was determined by SDS-PAGE with Coomassie Blue, showing a band at 45-75 kDa.