

Recombinant Peptostreptococcusmagnus Protein L Protein

Catalog No.: RPT0014 **Recombinant**

Sequence Information

Species	Gene ID	Swiss Prot
Peptostreptococcusmagnus		D6S9W1

Tags

N-His

Synonyms

RPL;Protein L

Product Information

Source	Purification
HEK293 cells	> 95% by SDS-PAGE.

Calculated MW	Observed MW
34.82 kDa	35-45 kDa

Endotoxin

< 0.01 EU/μg

Formulation

Lyophilized from a 0.22 μm filtered solution of PBS, pH 7.4.

Reconstitution

Centrifuge the vial before opening. Reconstitute to a concentration of 0.1-0.5 mg/mL in sterile distilled water. Avoid vortex or vigorously pipetting the protein. For long term storage, it is recommended to add a carrier protein or stabilizer (e.g. 0.1% BSA, 5% HSA, 10% FBS or 5% Trehalose), and aliquot the reconstituted protein solution to minimize free-thaw cycles.

Contact

 | 400-999-6126

 | cn.market@abclonal.com.cn

 | www.abclonal.com.cn

Background

Protein L was isolated from the surface of bacterial species Peptostreptococcus magnus and was found to bind Ig(IgG,IgM,IgA,IgE and IgD) through L chain interaction, from which the name was suggested. Despite this wide-ranging binding capability with respect to Ig classes, Protein L is not a universal immunoglobulin-binding protein. Binding of Protein L to immunoglobulins is restricted to those containing kappa light chains (i.e., k chain of the VL domain). In humans and mice, kappa (k) light chains predominate. The remaining immunoglobulins have lambda (l) light chains. The recombinant protein contains four immunoglobulin (Ig) binding domains (Bdomains) of the native protein. Besides antibody, protein L is also suitable for binding of a wide range of antibody fragments such as Fabs, single-chain variable fragments (scFv), and domain antibodies (Dabs).

Basic Information

Description

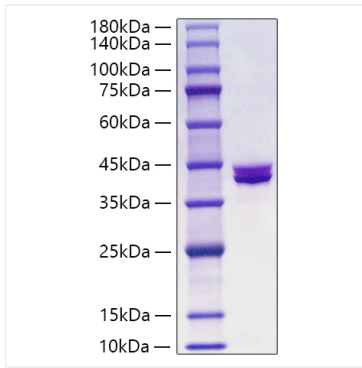
Recombinant Peptostreptococcusmagnus Protein L Protein is produced by HEK293 cells expression system. The target protein is expressed with sequence (Val103-Glu408) of Peptostreptococcusmagnus Protein L (Accession #) fused with and 6×His tag at the N-terminus.

Bio-Activity

Storage

Store at -20°C. Store the lyophilized protein at -20°C to -80 °C up to 1 year from the date of receipt. After reconstitution, the protein solution is stable at -20°C for 3 months, at 2-8°C for up to 1 week. Avoid repeated freeze/thaw cycles.

Validation Data



Recombinant *Peptostreptococcus magnus* Protein L Protein was determined by SDS-PAGE with Coomassie Blue, showing a band at 35-45 kDa.