

Recombinant Human IgE Protein

Catalog No.: RPT0015 **Recombinant**

Sequence Information

Species	Gene ID	Swiss Prot
Human	3497	P01854

Tags

C-His

Synonyms

Immunoglobulin heavy constant epsilon;
Ig epsilon chain C region; Ig epsilon
chain C region ND \square IgHE \square IgE

Product Information

Source	Purification
HEK293 cells	

Calculated MW	Observed MW
38.60 kDa	45-60 kDa

Endotoxin

< 0.01 EU/ μ g of the protein by LAL method.


Formulation

Lyophilized from a 0.22 μ m filtered solution of PBS, pH 7.4.

Reconstitution

Centrifuge the vial before opening.
Reconstitute to a concentration of 0.1-0.5 mg/mL in sterile distilled water. Avoid vortex or vigorously pipetting the protein. For long term storage, it is recommended to add a carrier protein or stabilizer (e.g. 0.1% BSA, 5% HSA, 10% FBS or 5% Trehalose), and aliquot the reconstituted protein solution to minimize free-thaw cycles.

Contact

 | 400-999-6126

 | cn.market@abclonal.com.cn

 | www.abclonal.com.cn

Background

Predicted to enable antigen binding activity and immunoglobulin receptor binding activity. Predicted to be involved in several processes, including activation of immune response; defense response to other organism; and phagocytosis. Predicted to be located in extracellular region. Predicted to be part of immunoglobulin complex, circulating. Predicted to be active in external side of plasma membrane.

Basic Information

Description

Recombinant Human IgE Protein is produced by HEK293 cells expression system. The target protein is expressed with sequence (Ser106-Gly427) of Human IgE \square Accession #AAB59395.1 \square fused with a His tag at the C-terminus.

Bio-Activity

Measured by its binding ability in a functional ELISA. Immobilized Human IgE (Catalog: RTP0015) at 1 μ g/mL (100 μ L/well) can bind Human IgE Rabbit mAb (Catalog: A23194) with a linear range of 0.06-0.6 ng/mL.

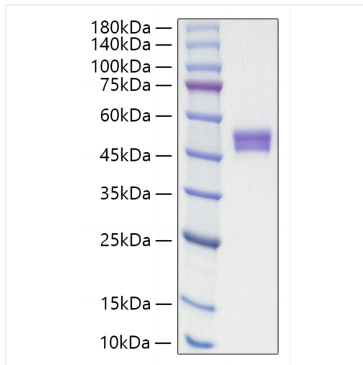
Storage

Store at -20 $^{\circ}$ C. Store the lyophilized protein at -20 $^{\circ}$ C to -80 $^{\circ}$ C up to 1 year from the date of receipt.

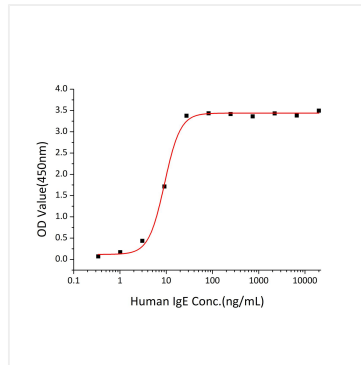
After reconstitution, the protein solution is stable at -20 $^{\circ}$ C for 3 months, at 2-8 $^{\circ}$ C for up to 1 week.

Avoid repeated freeze/thaw cycles.

Validation Data



Recombinant Human IgE Protein was determined by SDS-PAGE with Coomassie Blue, showing a band at 45-60 kDa.



Immobilized Human IgE (Catalog: RTP0015) at 1 μ g/mL (100 μ L/well) can bind Human IgE Rabbit mAb (Catalog: A23194) with a linear range of 0.06-0.6 ng/mL.