

Recombinant Mouse IgG1 Protein

Catalog No.: RPT0017 **Recombinant**

Sequence Information

Species	Gene ID	Swiss Prot
Mouse		P01868-1

Tags
NO-tag

Synonyms
IgG1;Ighg1;Igh-4;Ilg gamma-1 chain C region secreted form;

Background

As a monomeric immunoglobulin that is predominately involved in the secondary antibody response and the only isotype that can pass through the human placenta, Immunoglobulin G (IgG) is synthesized and secreted by plasma B cells, and constitutes 75% of serum immunoglobulins in humans. IgG antibodies protect the body against the pathogens by agglutination and immobilization, complement activation, toxin neutralization, as well as antibody-dependent cell-mediated cytotoxicity (ADCC). IgG tetramer contains two heavy chains (5 kDa) and two light chains (25 kDa) linked by disulfide bonds, that is the two identical halves form the Y-like shape. IgG is digested by pepsin proteolysis into Fab fragment (antigen-binding fragment) and Fc fragment ("crystallizable" fragment). IgG1 is most abundant in serum among the four IgG subclasses (IgG1, 2, 3 and 4) and binds to Fc receptors (FcγR) on phagocytic cells with high affinity.

Product Information

Source	Purification
HEK293 cells	

Endotoxin
<0.001EU/ugof the protein by LAL method.

Formulation
Lyophilized from a 0.22 μm filtered solution of PBS, pH 7.4.

Reconstitution
Centrifuge the vial before opening. Reconstitute to a concentration of 0.1-0.5 mg/mL in sterile distilled water. Avoid vortex or vigorously pipetting the protein. For long term storage, it is recommended to add a carrier protein or stabilizer (e.g. 0.1% BSA, 5% HSA, 10% FBS or 5% Trehalose), and aliquot the reconstituted protein solution to minimize free-thaw cycles.

Basic Information

Description
Recombinant Mouse IgG1 Protein is produced by HEK293 cells expression system. The target protein is expressed with sequence Val98-Lys324 of MouseIgG1(Accession #P01868-1) fused with no tag.

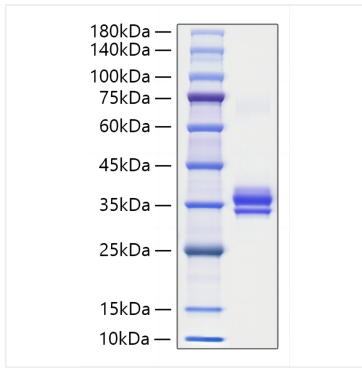
Bio-Activity

Storage
Store the lyophilized protein at -20°C to -80°C for long term. After reconstitution, the protein solution is stable at -20°C for 3 months, at 2-8°C for up to 1 week. Avoid repeated freeze/thaw cycles.

Contact

		400-999-6126
		cn.market@abclonal.com.cn
		www.abclonal.com.cn

Validation Data



Recombinant Mouse IgG1 Protein was determined by SDS-PAGE with Coomassie Blue, showing a band at 30-40 kDa.