

Recombinant Yeast ULP1/SUMO protease

Catalog No.: RPT0029LQ **Recombinant**

Sequence Information

Species	Gene ID	Swiss Prot
Yeast	856087	Q02724

Tags

N-6His

Synonyms

ULP1; YPL020C; LPB11C; Ubiquitin-like-specific protease 1

Product Information

Source	Purification
<i>E. coli</i>	

Calculated MW	Observed MW
26.31 kDa	25-35 kDa

Endotoxin

Formulation

Supplied as 0.22 µm filtered solution in 20mM Tris[]150mM NaCl[]50% glycerol, pH8.0

Reconstitution

Background

Ulp1 is a protease which is naturally present in yeast and specifically cleaves Ubl proteins (ubiquitin-like proteins) such as SUMO1 and Smt3 from other proteins. Ulp1 is a valuable tool in molecular biology for cleaving SUMO-tags from recombinant proteins.

Basic Information

Description

Recombinant Yeast Ubiquitin-like-specific protease 1/ULP1 protease Protein is produced by *E. coli* expression system. The target protein is expressed with sequence (Leu403-Lys621) of Yeast Ubiquitin-like-specific protease 1/ULP1 (Accession #NP_015305.1) fused with a His tag at the N-terminus.

Bio-Activity

Storage

Store at -70°C. This product is stable at ≤ -70°C for up to 1 year from the date of receipt. For optimal storage, aliquot into smaller quantities after centrifugation and store at recommended temperature. Avoid repeated freeze-thaw cycles. Avoid repeated freeze/thaw cycles.

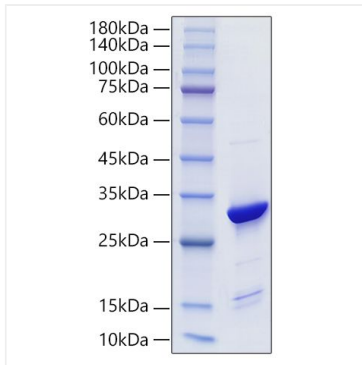
Contact

☎ | 400-999-6126

✉ | cn.market@abclonal.com.cn

🌐 | www.abclonal.com.cn

Validation Data



Recombinant Yeast ULP1/SUMO protease was determined by SDS-PAGE with Coomassie Blue, showing a band at 25-35 kDa.