

# Human CD3 Monoclonal Antibody

Catalog No.: YR0010

## Basic Information

### Molecular Weight

150kDa

### Endotoxin

<1EU/mg (<0.001EU/μg) Determined by  
LAL gel clotting assay

### Sterility

0.2 μm filtration

### Aggregation

<5% Determined by SECP

### Purity

>95% Determined by SDS-PAGE

## Background

Teplizumab is a biosimilar directed against the extracellular domain of CD3. This antibody can be used in flow cytometry or various assay format to measure CD3 expression.

## Reported Applications

ELISA, neutralization, functional assays such as bioanalytical PK and ADA assays, and those assays for studying biological pathways

## Immunogen Information

### Clone

Teplizumab Biosimilar

### Isotype

Human IgG1 kappa

### Immunogen

### Recommended Isotype Control(s)

### Recommended Dilution Buffer

1×PBS pH 7.3

## Contact

☎ | 400-999-6126

✉ | [cn.market@abclonal.com.cn](mailto:cn.market@abclonal.com.cn)

🌐 | [www.abclonal.com.cn](http://www.abclonal.com.cn)

## Product Information

### Production

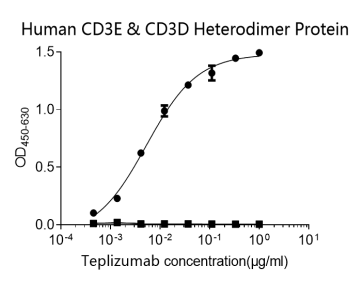
Purified from cell culture supernatant in an animal-free facility

### Purification

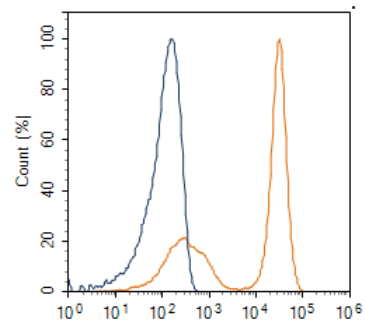
Protein A/G

### Storage

Store at 2 - 8°C. 2 - 8°C for up to 4 weeks and -80°C for long term storage (Avoid repeated freezing and thawing)



Direct ELISA binding curve demonstrating the recognition of Human Anti-Human CD3 (Research Grade Teplizumab Biosimilar) Monoclonal Antibody to CD3. The target protein was coated onto the microplate well surface, followed by binding of the antibody. A donkey anti-human IgG HRP conjugate was used for detection.



Detection of CD3 in Human PBMCs cell line by Flow Cytometry. Human PBMCs cell line was stained with Biotinylated Human Anti-Human CD3(Teplizumab Biosimilar) Monoclonal Antibody followed by APC conjugated NeutrAvidin Secondary Antibody, or unstained cells (open blue histogram).