

# Human HER2 Monoclonal Antibody

Catalog No.: YR0015

## Basic Information

### Molecular Weight

150 kDa

### Endotoxin

<1EU/mg (<0.001EU/μg) Determined by LAL gel clotting assay

### Sterility

0.2 μm filtration

### Aggregation

<5% Determined by SECP

### Purity

>95% Determined by SEC-HPLC

## Background

Trastuzumab, a humanized monoclonal antibody, interferes with the HER2/neu receptor and is mainly used to treat certain breast cancers, especially HER2-positive metastatic breast cancer. Combined with chemotherapy, trastuzumab increases both survival and response rate. There are four closely related receptor tyrosine kinases in the ErbB family of receptors: EGFR (ErbB-1; HER1 in humans), HER2/c-neu (ErbB-2), Her 3 (ErbB-3) and Her 4 (ErbB-4). Bound by members of the epidermal growth factor family (EGF-family) of extracellular protein ligands, the HER receptors embedded in the cell membrane promote cell growth and division by turning genes on and off. The HER2 pathway stimulates cell proliferation if it normally functions; when HER2 is overexpressed, cell growth accelerates beyond its normal limits, which happens in some cancers, notably certain types of breast cancer.

## Reported Applications

ELISA, neutralization, functional assays such as bioanalytical PK and ADA assays, and those assays for studying biological pathways

## Immunogen Information

### Clone

Trastuzumab Biosimilar

### Isotype

Human IgG1 kappa

### Immunogen

human HER2

### Recommended Isotype Control(s)

In Vivo Grade Recombinant Human IgG1 Kappa Isotype Control Antibody

### Recommended Dilution Buffer

1×PBS pH 7.3

## Contact

☎ | 400-999-6126

✉ | [cn.market@abclonal.com.cn](mailto:cn.market@abclonal.com.cn)

🌐 | [www.abclonal.com.cn](http://www.abclonal.com.cn)

## Product Information

### Production

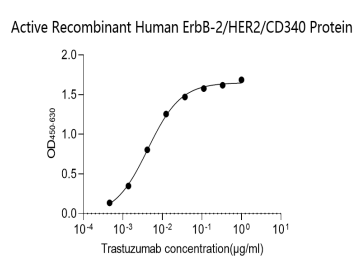
Purified from cell culture supernatant in an animal-free facility

### Purification

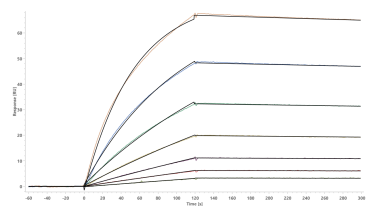
Protein A/G

### Storage

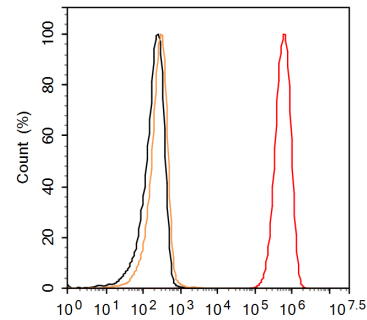
Store at 2 - 8°C. 2 - 8°C for up to 4 weeks and -80°C for long term storage (Avoid repeated freezing and thawing)



Direct ELISA binding curve demonstrating the recognition of Human Anti-Human ErbB2/HER2 (Research Grade Trastuzumab Biosimilar) Monoclonal Antibody to ErbB2/HER2. The target protein was coated onto the microplate well surface, followed by binding of the antibody. A donkey anti-human IgG HRP conjugate was used for detection.



Determined through SPR assay, the Human Anti-Human ErbB2/HER2 (Research Grade Trastuzumab Biosimilar) Monoclonal Antibody is capable of binding to Human ErbB2/HER2 with an affinity constant of 0.4389 nM.



Detection of ErbB2/HER2 in SK-BR-3 cell line by Flow Cytometry. SK-BR-3 cell line was stained with Human Anti-Human ErbB2/HER2 (Trastuzumab Biosimilar) Monoclonal Antibody followed by APC conjugated Anti-Human IgG Secondary Antibody, or unstained cells (open yellow histogram).