

STAT1 Rabbit pAb

Catalog No.: A12075 **21 Publications**

Basic Information

Observed MW

91kDa

Calculated MW

87kDa

Category

Primary antibody

Applications

WB, IHC-P, IF/ICC, IP, (ELISA)

Cross-Reactivity

Human, Mouse, Rat

Background

The protein encoded by this gene is a member of the STAT protein family. In response to cytokines and growth factors, STAT family members are phosphorylated by the receptor associated kinases, and then form homo- or heterodimers that translocate to the cell nucleus where they act as transcription activators. The protein encoded by this gene can be activated by various ligands including interferon-alpha, interferon-gamma, EGF, PDGF and IL6. This protein mediates the expression of a variety of genes, which is thought to be important for cell viability in response to different cell stimuli and pathogens. The protein plays an important role in immune responses to viral, fungal and mycobacterial pathogens. Mutations in this gene are associated with Immunodeficiency 31B, 31A, and 31C.

Recommended Dilutions

WB	1:500 - 1:1000
IHC-P	1:50 - 1:200
IF/ICC	1:50 - 1:200
IP	0.5µg-4µg antibody for 200µg-400µg extracts of whole cells
ELISA	Recommended starting concentration is 1 µg/mL. Please optimize the concentration based on your specific assay requirements.

Contact

 | 400-999-6126

 | cn.market@abclonal.com.cn

 | www.abclonal.com.cn

Immunogen Information

Gene ID

6772

Swiss Prot

P42224

Immunogen

A synthetic peptide corresponding to a sequence within amino acids 650-750 of human STAT1 (NP_009330.1).

Synonyms

CANDF7; IMD31A; IMD31B; IMD31C; ISGF-3; STAT91; STAT1

Product Information

Source

Rabbit

Isotype

IgG

Purification

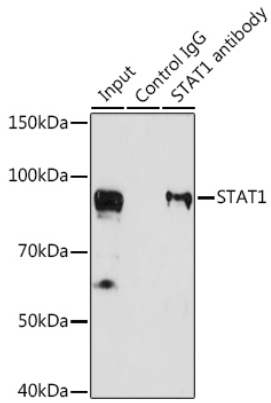
Affinity purification

Storage

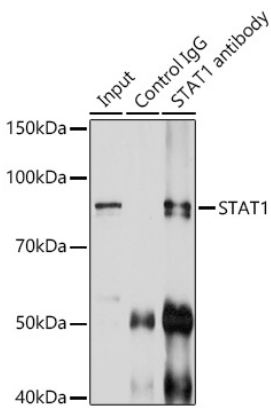
Store at -20°C. Avoid freeze / thaw cycles.

Buffer: PBS with 0.01% thimerosal, 50% glycerol, pH7.3.

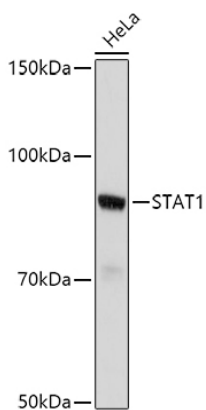
Validation Data



Immunoprecipitation analysis of 200 µg extracts of U-87MG cells using 3 µg STAT1 antibody (A12075). Western blot was performed from the immunoprecipitate using STAT1 antibody (A12075) at a dilution of 1:1000.

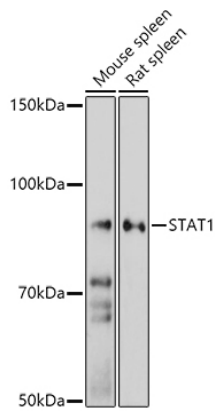


Immunoprecipitation analysis of 200 µg extracts of U-87MG cells using 3 µg STAT1 Rabbit pAb (A12075). Western blot was performed from the immunoprecipitate using STAT1 Rabbit pAb (A12075) at a dilution of 1:500.

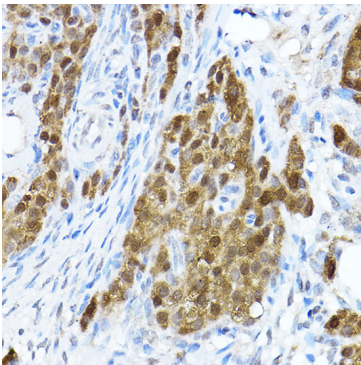


Western blot analysis of lysates from HeLa cells, using STAT1 Rabbit pAb (A12075) at 1:500 dilution. Secondary antibody: HRP-conjugated Goat anti-Rabbit IgG (H+L) (AS014) at 1:10000 dilution. Lysates/proteins: 25µg per lane. Blocking buffer: 3% nonfat dry milk in TBST. Detection: ECL Basic Kit (RM00020). Exposure time: 30s.

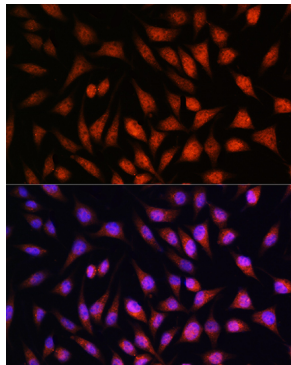
Validation Data



Western blot analysis of various lysates using STAT1 Rabbit pAb (A12075) at 1:500 dilution.
Secondary antibody: HRP-conjugated Goat anti-Rabbit IgG (H+L) (AS014) at 1:10000 dilution.
Lysates/proteins: 25µg per lane.
Blocking buffer: 3% nonfat dry milk in TBST.
Detection: ECL Enhanced Kit (RM00021).
Exposure time: 180s.



Immunohistochemistry analysis of paraffin-embedded Rat ovary using STAT1 Rabbit pAb (A12075) at dilution of 1:100 (40x lens). High pressure antigen retrieval performed with 0.01M Citrate Buffer (pH 6.0) prior to IHC staining.



Immunofluorescence analysis of L929 cells using STAT1 Rabbit pAb (A12075) at dilution of 1:100. Secondary antibody: Cy3-conjugated Goat anti-Rabbit IgG (H+L) (AS007) at 1:500 dilution. Blue: DAPI for nuclear staining.