

SARS-CoV-2 Nucleoprotein Rabbit mAb

Catalog No.: A21042 **Recombinant** **4 Publications**

Basic Information

Observed MW

50kDa

Calculated MW

46kDa

Category

Primary antibody

Applications

WB, IF/ICC, ELISA

Cross-Reactivity

SARS-CoV-2

CloneNo number

ARC51499

Background

Severe acute respiratory syndrome coronavirus 2 (SARS-CoV-2) is an enveloped, positive-sense, single-stranded RNA virus that causes coronavirus disease 2019 (COVID-19). Virus particles include the RNA genetic material and structural proteins needed for invasion of host cells. Once inside the cell the infecting RNA is used to encode structural proteins that make up virus particles, nonstructural proteins that direct virus assembly, transcription, replication and host control and accessory proteins whose function has not been determined.~ The structural proteins of SARS-CoV-2 include the envelope protein (E), spike or surface glycoprotein (S), membrane protein (M) and the nucleocapsid protein (N). The nucleocapsid phosphoprotein is a structural protein that binds to, protects the viral RNA genome and is involved in packaging the RNA into virus particles. The N protein has been suggested as an antiviral drug target.

Recommended Dilutions

WB 1:2000 - 1:10000**IF/ICC** 1:100 - 1:500

ELISA Recommended starting concentration is 1 µg/mL. Please optimize the concentration based on your specific assay requirements.

Immunogen Information

Gene ID

43740575

Swiss Prot

P0DTC9

Immunogen

Recombinant protein (or fragment). This information is considered to be commercially sensitive.

Synonyms

N; Nucleoprotein; NC; SARS-CoV-2 Nucleoprotein

Contact

 | 400-999-6126 | cn.market@abclonal.com.cn | www.abclonal.com.cn

Product Information

Source

Rabbit

Isotype

IgG

Purification

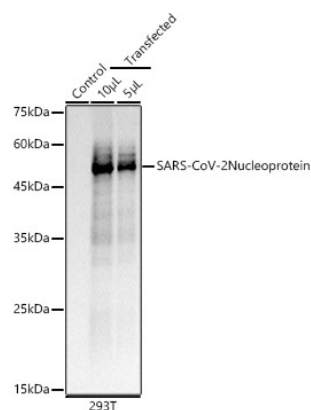
Affinity purification

Storage

Store at -20°C. Avoid freeze / thaw cycles.

Buffer: PBS containing 50% glycerol and 0.05% BSA, preserved with proclin300 or sodium azide (as specified on the Certificate of Analysis), pH 7.3.

Validation Data



Western blot analysis of lysates from 293T cells, using SARS-CoV-2 Nucleoprotein Rabbit mAb (A21042) at 1:10000 dilution.

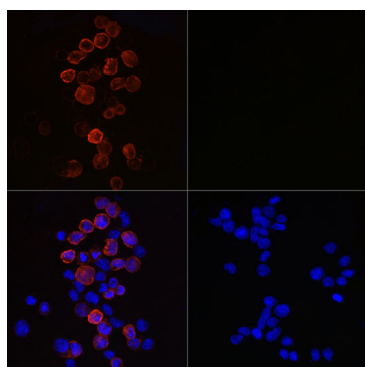
Secondary antibody: HRP-conjugated Goat anti-Rabbit IgG (H+L) (AS014) at 1:10000 dilution.

Lysates/proteins: 25µg per lane.

Blocking buffer: 3% nonfat dry milk in TBST.

Detection: ECL Basic Kit (RM00020).

Exposure time: 0.2s.



Immunofluorescence analysis of 293T-N and 293T cells using SARS-CoV-2 Nucleoprotein Rabbit mAb (A21042) at dilution of 1:400 (40x lens). Secondary antibody: Cy3-conjugated Goat anti-Rabbit IgG (H+L) (AS007) at 1:500 dilution. Blue: DAPI for nuclear staining.