

BIN2 Rabbit pAb

Catalog No.: A21175

Basic Information

Observed MW

43kDa

Calculated MW

43kDa

Category

Primary antibody

Applications

WB, ELISA

Cross-Reactivity

Arabidopsis thaliana

Background

Encodes BIN2, a member of the ATSK (shaggy-like kinase) family. BIN2 functions in the cross-talk between auxin and brassinosteroid signaling pathways. BIN2 regulates root epidermal cell fate specification by phosphorylating EGL3 and TTG1. BIN2-mediated phosphorylation appears to promote BZR1 export from the nucleus.

Recommended Dilutions

WB 1:50 - 1:200

ELISA Recommended starting concentration is 1 µg/mL. Please optimize the concentration based on your specific assay requirements.

Immunogen Information

Gene ID

827605

Swiss Prot

Q39011

Immunogen

Synthetic peptide. This information is considered to be commercially sensitive.

Synonyms

ATSK21; BRASSINOSTEROID-INSENSITIVE 2; DWARF 12; DWF12; F28A21.120; F28A21_120; SHAGGY-LIKE KINASE 21; SK21; UCU1; ULTRACURVATA 1; BIN2

Contact

☎ | 400-999-6126

✉ | cn.market@abclonal.com.cn

🌐 | www.abclonal.com.cn

Product Information

Source

Rabbit

Isotype

IgG

Purification

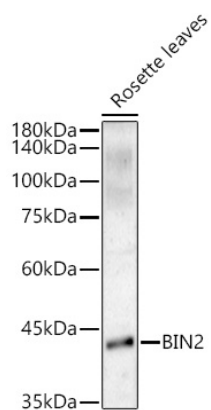
Affinity purification

Storage

Store at -20°C. Avoid freeze / thaw cycles.

Buffer: PBS containing 50% glycerol, preserved with proclin300 or sodium azide (as specified on the Certificate of Analysis), pH 7.3.

Validation Data



Western blot analysis of lysates from Rosette leaves, using BIN2 Rabbit pAb (A21175) at 1:200 dilution.
Secondary antibody: HRP-conjugated Goat anti-Rabbit IgG (H+L) (AS014) at 1:10000 dilution.
Lysates/proteins: 25µg per lane.
Blocking buffer: 3% nonfat dry milk in TBST.
Detection: ECL Basic Kit (RM00020).
Exposure time: 180s.