

N-Myc/MYCN Rabbit mAb

Catalog No.: A22174 **Recombinant** **3 Publications**

Basic Information

Observed MW

62 kDa

Calculated MW

50 kDa

Category

Primary antibody

Applications

WB, ELISA

Cross-Reactivity

Human

CloneNo number

ARC55211

Background

This gene is a member of the MYC family and encodes a protein with a basic helix-loop-helix (bHLH) domain. This protein is located in the nucleus and must dimerize with another bHLH protein in order to bind DNA. Amplification of this gene is associated with a variety of tumors, most notably neuroblastomas. Multiple alternatively spliced transcript variants encoding different isoforms have been found for this gene.

Recommended Dilutions

WB 1:1000 - 1:6000

ELISA Recommended starting concentration is 1 µg/mL. Please optimize the concentration based on your specific assay requirements.

Immunogen Information

Gene ID

4613

Swiss Prot

P04198

Immunogen

Synthetic peptide. This information is considered to be commercially sensitive.

Synonyms

NMYC; ODED; MODED; N-myc; bHLHe37; MYCNsORF; MYCNsPEP; N-Myc/MYCN

Contact

☎ | 400-999-6126

✉ | cn.market@abclonal.com.cn

🌐 | www.abclonal.com.cn

Product Information

Source

Rabbit

Isotype

IgG

Purification

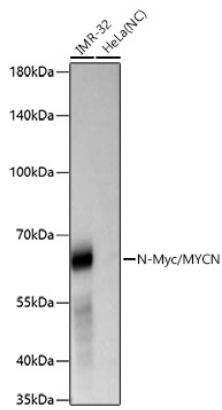
Affinity purification

Storage

Store at -20°C. Avoid freeze / thaw cycles.

Buffer: PBS containing 50% glycerol and 0.05% BSA, preserved with proclin300 or sodium azide (as specified on the Certificate of Analysis), pH 7.3.

Validation Data



Western blot analysis of lysates from SH-SY5Y cells, using N-Myc/MYCN Rabbit mAb (A22174) at 1:1000 dilution.

Secondary antibody: HRP-conjugated Goat anti-Rabbit IgG (H+L) (AS014) at 1:10000 dilution.

Lysates/proteins: 25µg per lane.

Blocking buffer: 3% nonfat dry milk in TBST.

Detection: ECL Enhanced Kit (RM00021).

Exposure time: 60s.