

# CD3d Rabbit pAb

Catalog No.: A23883

## Basic Information

### Observed MW

20kDa

### Calculated MW

19KDa

### Category

Primary antibody

### Applications

WB, ELISA

### Cross-Reactivity

Mouse

## Background

Predicted to enable identical protein binding activity and transmembrane signaling receptor activity. Involved in positive thymic T cell selection. Part of alpha-beta T cell receptor complex. Is expressed in thymus primordium. Human ortholog(s) of this gene implicated in immunodeficiency 19 and severe combined immunodeficiency. Orthologous to human CD3D (CD3d molecule).

## Recommended Dilutions

**WB** 1:500 - 1:1000

**ELISA** Recommended starting concentration is 1 µg/mL. Please optimize the concentration based on your specific assay requirements.

## Immunogen Information

### Gene ID

12500

### Swiss Prot

P04235

### Immunogen

Recombinant protein (or fragment). This information is considered to be commercially sensitive.

### Synonyms

T3d; CD3d

## Contact

☎ | 400-999-6126

✉ | [cn.market@abclonal.com.cn](mailto:cn.market@abclonal.com.cn)

🌐 | [www.abclonal.com.cn](http://www.abclonal.com.cn)

## Product Information

### Source

Rabbit

### Isotype

IgG

### Purification

Affinity purification

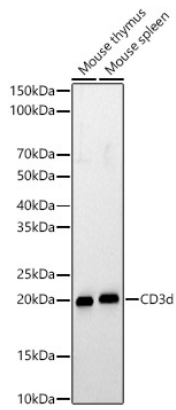
### Storage

Store at -20°C. Avoid freeze / thaw cycles.

Buffer: PBS containing 50% glycerol, preserved with proclin300 or sodium azide (as specified on the Certificate of Analysis), pH 7.3.

## Validation Data

---



Western blot analysis of various lysates, using CD3d Rabbit pAb (A23883) at 1:400 dilution.  
Secondary antibody: HRP-conjugated Goat anti-Rabbit IgG (H+L) (AS014) at 1:10000 dilution.  
Lysates/proteins: 25µg per lane.  
Blocking buffer: 3% nonfat dry milk in TBST.  
Detection: ECL Enhanced Kit (RM00021).  
Exposure time: 30s.