

COL11A1 Rabbit mAb

Catalog No.: A24604 **Recombinant**

Basic Information

Observed MW

280kDa

Calculated MW

167kDa/176kDa/181kDa/182kDa

Category

Primary antibody

Applications

ELISA,WB,IF/ICC

Cross-Reactivity

Human

CloneNo number

ARC63678

Background

This gene encodes one of the two alpha chains of type XI collagen, a minor fibrillar collagen. Type XI collagen is a heterotrimer but the third alpha chain is a post-translationally modified alpha 1 type II chain. Mutations in this gene are associated with type II Stickler syndrome and with Marshall syndrome. A single-nucleotide polymorphism in this gene is also associated with susceptibility to lumbar disc herniation. Multiple transcript variants have been identified for this gene.

Recommended Dilutions

WB	1:1000 - 1:5000
IF/ICC	1:50 - 1:200

Immunogen Information

Gene ID

1301

Swiss Prot

P12107

Immunogen

A synthetic peptide corresponding to a sequence within amino acids 301-400 of human COL11A1 mAb (NP_001845.3).

Synonyms

STL2; COLL6; CO11A1; DFNA37; COL11A1

Contact

☎ | 400-999-6126

✉ | cn.market@abclonal.com.cn

🌐 | www.abclonal.com.cn

Product Information

Source

Rabbit

Isotype

IgG

Purification

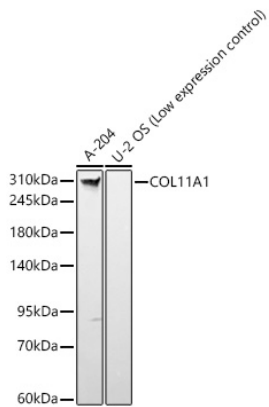
Affinity purification

Storage

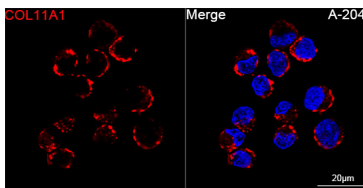
Store at -20°C. Avoid freeze / thaw cycles.

Buffer: 59% PBS with 0.01% Sodium azide,0.05% BSA,40% Glycerol,PH 7.2

Validation Data



Western blot analysis of various lysates, using COL11A1 Rabbit mAb (A24604) at 1:2000 dilution.
Secondary antibody: HRP Goat Anti-Rabbit IgG (H+L) (AS014) at 1:10000 dilution.
Lysates/proteins: 25ug per lane.
Blocking buffer: 3% nonfat dry milk in TBST.
Detection: ECL Basic Kit (RM00020).
Exposure time: 1s.



Confocal imaging of A-204 cells using COL11A1 Rabbit mAb (A24604, dilution 1:200) (Red). DAPI was used for nuclear staining (blue). Objective: 100x.