

CD4 Rabbit PolymAb®

Catalog No.: A26036PM **2 Publications**

Basic Information

Observed MW

51 kDa

Calculated MW

51 kDa

Category

Primary antibody

Applications

WB, IF-F, IF-P, IHC-P, ELISA

Cross-Reactivity

Human, Mouse, Cynomolgus monkey

Background

Predicted to enable several functions, including interleukin-16 binding activity; interleukin-16 receptor activity; and protein homodimerization activity. Involved in helper T cell enhancement of adaptive immune response. Acts upstream of or within several processes, including defense response to Gram-negative bacterium; positive regulation of calcium-mediated signaling; and positive regulation of peptidyl-tyrosine phosphorylation. Located in endoplasmic reticulum; external side of plasma membrane; and membrane raft. Is expressed in several structures, including alimentary system; brain; genitourinary system; hemolymphoid system; and liver and biliary system. Used to study type 1 diabetes mellitus. Human ortholog(s) of this gene implicated in immunodeficiency 79. Orthologous to human CD4 (CD4 molecule).

Recommended Dilutions

WB	1:5000 - 1:20000
IF-F	1:200 - 1:600
IF-P	1:200 - 1:600
IHC-P	1:500 - 1:2000
ELISA	Recommended starting concentration is 1 µg/mL. Please optimize the concentration based on your specific assay requirements.

Contact

	400-999-6126
	cn.market@abclonal.com.cn
	www.abclonal.com.cn

Immunogen Information

Gene ID

12504

Swiss Prot

P06332

Immunogen

Recombinant protein (or fragment). This information is considered to be commercially sensitive.

Synonyms

L3T4; Ly-4

Product Information

Source

Rabbit

Isotype

IgG

Purification

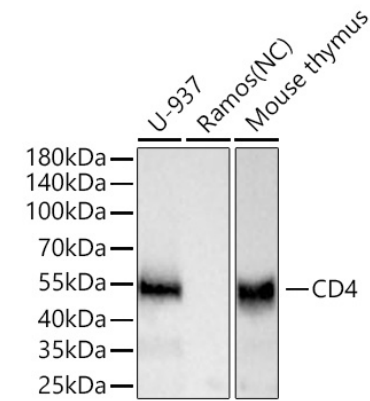
Affinity purification

Storage

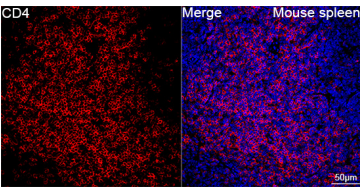
Store at -20°C. Avoid freeze / thaw cycles.

Buffer: PBS containing 50% glycerol and 0.05% BSA, preserved with proclin300 or sodium azide (as specified on the Certificate of Analysis), pH 7.3.

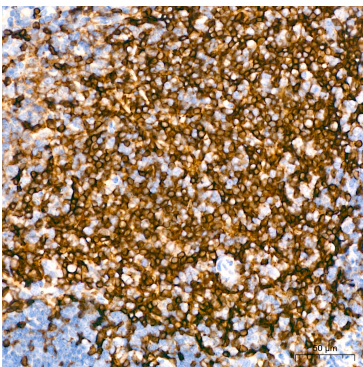
Validation Data



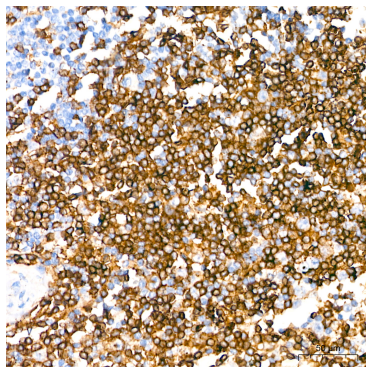
Western blot analysis of various lysates using CD4 Rabbit PolymAb® (A26036PM) at 1:5000 dilution incubated at room temperature for 1.5 hours.
Secondary antibody: HRP-conjugated Goat anti-Rabbit IgG (H+L) (AS014) at 1:10000 dilution.
Lysates/proteins: 25 µg per lane.
Blocking buffer: 3% nonfat dry milk in TBST.
Detection: ECL Basic Kit (RM00020).
Negative control (NC): Ramos
Exposure time: 5s.



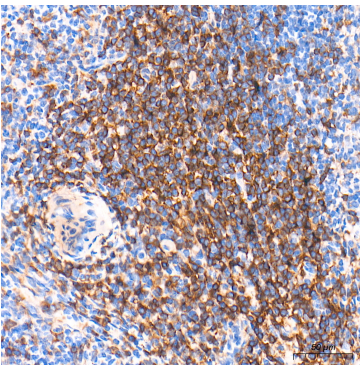
Confocal imaging of paraffin-embedded Mouse spleen tissue using CD4 Rabbit PolymAb® (A26036PM, dilution 1:200) followed by a further incubation with Cy3 Goat Anti-Rabbit IgG (H+L) (AS007, dilution 1:500) (Red). DAPI was used for nuclear staining (Blue). High pressure antigen retrieval performed with 0.01M Citrate Buffer (pH 6.0) prior to IF staining. Objective: 40x.



Immunohistochemistry analysis of paraffin-embedded Mouse spleen tissue using CD4 Rabbit PolymAb® (A26036PM) at a dilution of 1:800 (40x lens). High pressure antigen retrieval performed with 0.01M Citrate Buffer(pH 6.0) prior to IHC staining.



Immunohistochemistry analysis of paraffin-embedded Human spleen tissue using CD4 Rabbit PolymAb® (A26036PM) at a dilution of 1:800 (40x lens). High pressure antigen retrieval performed with 0.01M Citrate Buffer(pH 6.0) prior to IHC staining.



Immunohistochemistry analysis of paraffin-embedded Cynomolgus monkey spleen tissue using CD4 Rabbit PolymAb® (A26036PM) at a dilution of 1:400 (40x lens). antigen retrieval performed with prior to IHC staining.