

LHX6 Rabbit pAb

Catalog No.: A7364

Basic Information

Observed MW

56kDa

Calculated MW

40kDa

Category

Primary antibody

Applications

ELISA, WB

Cross-Reactivity

Human, Mouse, Rat

Background

This gene encodes a member of a large protein family that contains the LIM domain, a unique cysteine-rich zinc-binding domain. The encoded protein has tandem LIM domains as well as a DNA-binding homeodomain. The protein functions as a transcription factor involved in embryogenesis and head development and is highly expressed in neural crest derived mesenchyme cells. Alternative splicing results in multiple transcript variants encoding distinct isoforms.

Recommended Dilutions

WB 1:500 - 1:2000

Immunogen Information

Gene ID

26468

Swiss Prot

Q9UPM6

Immunogen

Recombinant fusion protein containing a sequence corresponding to amino acids 143-392 of human LHX6 (NP_055183.2).

Synonyms

hLHX6; LHX6.1; LHX6

Contact

☎ | 400-999-6126

✉ | cn.market@abclonal.com.cn

🌐 | www.abclonal.com.cn

Product Information

Source

Rabbit

Isotype

IgG

Purification

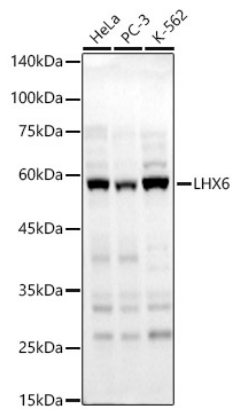
Affinity purification

Storage

Store at -20°C. Avoid freeze / thaw cycles.

Buffer: PBS with 0.02% sodium azide, 50% glycerol, pH 7.3.

Validation Data



Western blot analysis of various lysates, using LHX6 Rabbit pAb (A7364) at 1:2000 dilution.
Secondary antibody: HRP Goat Anti-Rabbit IgG (H+L) (AS014) at 1:10000 dilution.
Lysates/proteins: 25ug per lane.
Blocking buffer: 3% nonfat dry milk in TBST.
Detection: ECL Basic Kit (RM00020).
Exposure time: 30s.