

KCTD15 Rabbit pAb

Catalog No.: A8256

Basic Information

Observed MW

32kDa

Calculated MW

32kDa

Category

Primary antibody

Applications

ELISA, WB

Cross-Reactivity

Human, Mouse, Rat

Background

Enables identical protein binding activity. Predicted to be involved in protein homooligomerization.

Recommended Dilutions

WB 1:500 - 1:2000

Immunogen Information

Gene ID

79047

Swiss Prot

Q96S11

Immunogen

Recombinant fusion protein containing a sequence corresponding to amino acids 1-234 of human KCTD15 (NP_076981.2).

Synonyms

KCTD15

Contact

☎ | 400-999-6126

✉ | cn.market@abclonal.com.cn

🌐 | www.abclonal.com.cn

Product Information

Source

Rabbit

Isotype

IgG

Purification

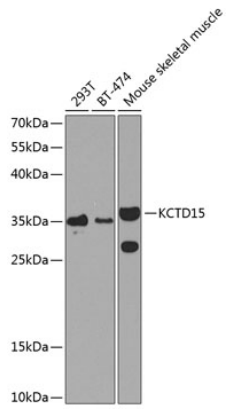
Affinity purification

Storage

Store at -20°C. Avoid freeze / thaw cycles.

Buffer: PBS with 0.02% sodium azide, 50% glycerol, pH 7.3.

Validation Data



Western blot analysis of extracts of various cell lines, using KCTD15 antibody (A8256) at 1:1000 dilution.
Secondary antibody: HRP Goat Anti-Rabbit IgG (H+L) (AS014) at 1:10000 dilution.
Lysates/proteins: 25µg per lane.
Blocking buffer: 3% nonfat dry milk in TBST.
Detection: ECL Basic Kit (RM00020).
Exposure time: 90s.