

Phospho-PEA15-S104 Rabbit pAb

Catalog No.: AP0788

Basic Information

Observed MW

13kDa/15kDa

Calculated MW

15kDa

Category

Primary antibody

Applications

ELISA, WB

Cross-Reactivity

Human, Mouse, Rat

Background

This gene encodes a death effector domain-containing protein that functions as a negative regulator of apoptosis. The encoded protein is an endogenous substrate for protein kinase C. This protein is also overexpressed in type 2 diabetes mellitus, where it may contribute to insulin resistance in glucose uptake. Alternative splicing results in multiple transcript variants.

Recommended Dilutions

WB 1:500 - 1:2000

Immunogen Information

Gene ID

8682

Swiss Prot

Q15121

Immunogen

A synthetic phosphorylated peptide around S104 of human PEA15 (NP_003759.1).

Synonyms

PED; MAT1; HMAT1; MAT1H; PEA-15; HUMMAT1H; PED-PEA15; PED/PEA15; Phospho-PEA15-S104

Contact

☎ | 400-999-6126

✉ | cn.market@abclonal.com.cn

🌐 | www.abclonal.com.cn

Product Information

Source

Rabbit

Isotype

IgG

Purification

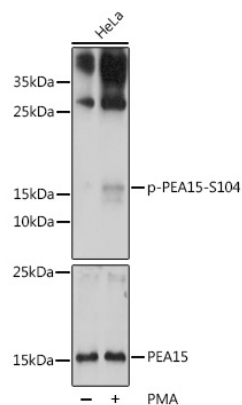
Affinity purification

Storage

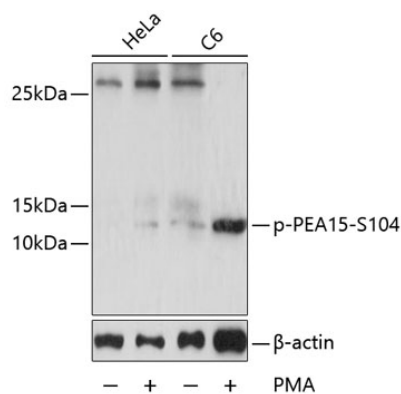
Store at -20°C. Avoid freeze / thaw cycles.

Buffer: PBS with 0.01% thimerosal, 50% glycerol, pH7.3.

Validation Data



Western blot analysis of lysates from HeLa cells, using Phospho-PEA15-S104 Rabbit pAb (A9956). HeLa cells were treated by PMA/TPA (200nM) for 15 minutes after serum-starvation overnight. Secondary antibody: HRP Goat Anti-Rabbit IgG (H+L) (AS014) at 1:10000 dilution. Lysates/proteins: 25µg per lane. Blocking buffer: 3% BSA. Detection: ECL Basic Kit (RM00020). Exposure time: 90s.



Western blot analysis of lysates from HeLa and C6 cells, using Phospho-PEA15-S104 Rabbit pAb (AP0788) at 1:2000 dilution. HeLa cells were treated by PMA/TPA (200nM) for 15 minutes after serum-starvation overnight. C6 cells were treated by PMA/TPA (200nM) for 30 minutes after serum-starvation overnight. Secondary antibody: HRP Goat Anti-Rabbit IgG (H+L) (AS014) at 1:10000 dilution. Lysates/proteins: 25µg per lane. Blocking buffer: 3% BSA. Detection: ECL Basic Kit (RM00020). Exposure time: 10s.