

# Phospho-IGF1R-Y1165/1166/INSR-Y1189/1190 Rabbit pAb

Catalog No.: AP0902

## Basic Information

### Observed MW

125kDa

### Calculated MW

154kDa/155kDa/156kDa

### Category

Primary antibody

### Applications

ELISA, WB

### Cross-Reactivity

Human, Mouse, Rat

## Background

This receptor binds insulin-like growth factor with a high affinity. It has tyrosine kinase activity. The insulin-like growth factor I receptor plays a critical role in transformation events. Cleavage of the precursor generates alpha and beta subunits. It is highly overexpressed in most malignant tissues where it functions as an anti-apoptotic agent by enhancing cell survival. Alternatively spliced transcript variants encoding distinct isoforms have been found for this gene. [provided by RefSeq, May 2014]

## Recommended Dilutions

WB 1:500 - 1:2000

## Immunogen Information

### Gene ID

3480/3643

### Swiss Prot

P08069/P06213

### Immunogen

A synthetic phosphorylated peptide around Y1165 & Y1166 of human IGF1R/IGF1R (NP\_000866.1).

### Synonyms

IGF1R/INSR; Phospho-IGF1R-Y1165/1166/INSR-Y1189/1190

## Contact

☎ | 400-999-6126

✉ | [cn.market@abclonal.com.cn](mailto:cn.market@abclonal.com.cn)

🌐 | [www.abclonal.com.cn](http://www.abclonal.com.cn)

## Product Information

### Source

Rabbit

### Isotype

IgG

### Purification

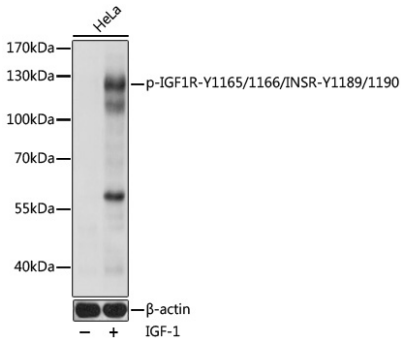
Affinity purification

### Storage

Store at -20°C. Avoid freeze / thaw cycles.

Buffer: PBS with 0.01% thimerosal, 50% glycerol, pH7.3.

# Validation Data



Western blot analysis of lysates from HeLa cells, using Phospho-IGF1R-Y1165/1166/INSR-Y1189/1190 pAb (AP0902) at 1:1000 dilution. HeLa cells were treated by IGF-1 (50 ng/mL) at 37°C for 30 minutes after serum-starvation overnight.  
Secondary antibody: HRP Goat Anti-Rabbit IgG (H+L) (AS014) at 1:10000 dilution.  
Lysates/proteins: 25µg per lane.  
Blocking buffer: 3% BSA.  
Detection: ECL Basic Kit (RM00020).  
Exposure time: 1s.