

Phospho-DDR1-Y792 Rabbit pAb

Catalog No.: AP1072 **1 Publications**

Basic Information

Observed MW

125kDa

Calculated MW

101kDa

Category

Primary antibody

Applications

ELISA, WB

Cross-Reactivity

Human, Mouse, Rat

Background

Receptor tyrosine kinases play a key role in the communication of cells with their microenvironment. These kinases are involved in the regulation of cell growth, differentiation and metabolism. The protein encoded by this gene belongs to a subfamily of tyrosine kinase receptors with homology to Dictyostelium discoideum protein discoidin I in their extracellular domain, and that are activated by various types of collagen. Expression of this protein is restricted to epithelial cells, particularly in the kidney, lung, gastrointestinal tract, and brain. In addition, it has been shown to be significantly overexpressed in several human tumors. Alternatively spliced transcript variants encoding different isoforms have been described for this gene.

Recommended Dilutions

WB 1:500 - 1:2000

Immunogen Information

Gene ID

780

Swiss Prot

Q08345

Immunogen

A synthetic phosphorylated peptide around Y792 of human DDR1 (NP_054699.2).

Synonyms

CAK; DDR; NEP; HGK2; PTK3; RTK6; TRKE; CD167; EDDR1; MCK10; NTRK4; PTK3A; Phospho-DDR1-Y792

Contact

☎ | 400-999-6126

✉ | cn.market@abclonal.com.cn

🌐 | www.abclonal.com.cn

Product Information

Source

Rabbit

Isotype

IgG

Purification

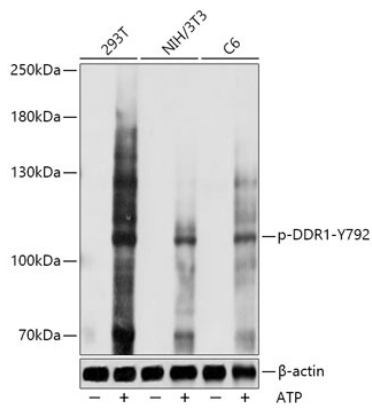
Affinity purification

Storage

Store at -20°C. Avoid freeze / thaw cycles.

Buffer: PBS with 0.01% thimerosal, 50% glycerol, pH7.3.

Validation Data



Western blot analysis of various lysates using Phospho-DDR1-Y792 Rabbit pAb (AP1072) at 1:1000 dilution. 293T cells were treated by ATP(5 mM) at 30°C for 1 hour. NIH/3T3 cells were treated by ATP(5 mM) at 30°C for 1 hour. C6 cells were treated by ATP(5 mM) at 30°C for 1 hour. Secondary antibody: HRP-conjugated Goat anti-Rabbit IgG (H+L) (AS014) at 1:10000 dilution. Lysates/proteins: 25µg per lane. Blocking buffer: 3% BSA. Detection: ECL Basic Kit (RM00020). Exposure time: 1s.