

# Recombinant Human Ephrin-A3/EFNA3 Protein

Catalog No.: RP01022 **Recombinant**

## Sequence Information

Species	Gene ID	Swiss Prot
Human	1944	P52797-1

### Tags

C-hFc&His

### Synonyms

EFNA3;EFL2;EPLG3;Ehk1-L;LERK3;ephrin-A3

## Product Information

Source	Purification
HEK293 cells	> 95% by SDS-PAGE.

Calculated MW	Observed MW
50.45 kDa	65-70 kDa

### Endotoxin

< 0.1 EU/μg of the protein by LAL method.

### Formulation

Lyophilized from a 0.22 μm filtered solution of PBS, pH 7.4. Contact us for customized product form or formulation.

### Reconstitution

Centrifuge the vial before opening. Reconstitute to a concentration of 0.1-0.5 mg/mL in sterile distilled water. Avoid vortex or vigorously pipetting the protein. For long term storage, it is recommended to add a carrier protein or stabilizer (e.g. 0.1% BSA, 5% HSA, 10% FBS or 5% Trehalose), and aliquot the reconstituted protein solution to minimize free-thaw cycles.

## Contact

 | 400-999-6126

 | [cn.market@abclonal.com.cn](mailto:cn.market@abclonal.com.cn)

 | [www.abclonal.com.cn](http://www.abclonal.com.cn)

## Background

### Basic Information

#### Description

Recombinant Human Ephrin-A3/EFNA3 Protein is produced by HEK293 cells expression system. The target protein is expressed with sequence (Met 1-Ser 213) of human Ephrin A3 (Accession #NP\_004943.1) fused with an Fc, 6×His tag at the C-terminus.

#### Bio-Activity

1. Measured by its binding ability in a functional ELISA. Immobilized Mouse EPHA6 at 1 μg/mL (100 μL/well) can bind Human EphrinA3 with a linear range of 0.3-113.9 ng/mL. 2. Measured by its binding ability in a functional ELISA. Immobilized Mouse EPHA6 at 1 μg/mL (100 μL/well) can bind Human EphrinA3 with a linear range of 0.3-59 ng/mL.

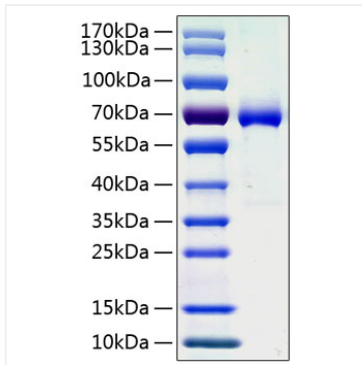
#### Storage

Store at -20°C. Store the lyophilized protein at -20°C to -80 °C up to 1 year from the date of receipt.

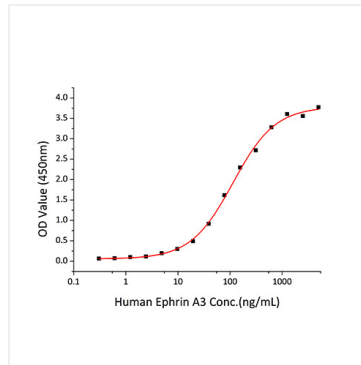
After reconstitution, the protein solution is stable at -20°C for 3 months, at 2-8°C for up to 1 week.

Avoid repeated freeze/thaw cycles.

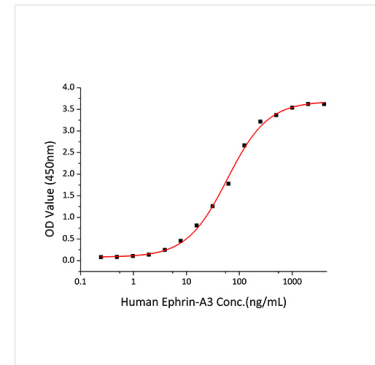
## Validation Data



Recombinant Human Ephrin-A3/EFNA3 Protein was determined by SDS-PAGE with Coomassie Blue, showing a band at 68 kDa.



Immobilized Mouse EPHA6 at 1 µg/mL (100 µL/well) can bind Human EphrinA3 with a linear range of 0.3-113.9ng/mL.



Immobilized Mouse EPHA6 at 1 µg/mL (100 µL/well) can bind Human EphrinA3 with a linear range of 0.3-59 ng/mL.