

NeuN Rabbit pAb

Catalog No.: A0951SP **21 Publications**

Basic Information

Observed MW

46-55 kDa

Calculated MW

34 kDa/35 kDa

Category

Primary antibody

Applications

WB,IF-F,IF-P,IHC-P,mIHC,ELISA

Cross-Reactivity

Human, Mouse, Rat

Background

This gene encodes a member of the RNA-binding FOX protein family which is involved in the regulation of alternative splicing of pre-mRNA. The protein has an N-terminal proline-rich region, an RNA recognition motif (RRM) domain, and a C-terminal alanine-rich region. This gene produces the neuronal nuclei (NeuN) antigen that has been widely used as a marker for post-mitotic neurons. This gene has its highest expression in the central nervous system and plays a prominent role in neural tissue development and regulation of adult brain function. Mutations in this gene have been associated with numerous neurological disorders. Alternative splicing of this gene results in multiple transcript variants encoding distinct isoforms.

Recommended Dilutions

WB	1:1000 - 1:10000
IF-F	1:200 - 1:800
IF-P	1:200 - 1:800
IHC-P	1:1000-1:4000
mIHC	1:1000-1:4000
ELISA	Recommended starting concentration is 1 µg/mL. Please optimize the concentration based on your specific assay requirements.

Contact

☎ | 400-999-6126

✉ | cn.market@abclonal.com.cn

🌐 | www.abclonal.com.cn

Immunogen Information

Gene ID

146713

Swiss Prot

A6NFN3

Immunogen

This information is considered to be commercially sensitive.

Synonyms

FOX3; NEUN; FOX-3; HRNBP3; NeuN

Product Information

Source

Rabbit

Isotype

IgG

Purification

Affinity purification

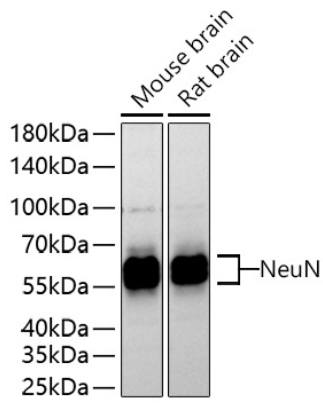
Storage

Store at -20°C. Avoid freeze / thaw cycles.

Buffer: PBS, pH 7.3, containing 50% glycerol. Preserved with Proclin300 or sodium azide.

May contain 0.05% BSA as specified on the Certificate of Analysis.

Validation Data



Western blot analysis of various lysates using NeuN Rabbit pAb (A0951SP) at 1:1000 dilution incubated overnight at 4°C.

Secondary antibody: HRP-conjugated Goat anti-Rabbit IgG (H+L) (AS014) at 1:10000 dilution.

Lysates/proteins: 25 µg per lane.

Blocking buffer: 3% nonfat dry milk in TBST.

Detection: ECL Basic Kit (RM00020).

Exposure time: 30 s.