

PI3 Kinase p85 alpha Rabbit pAb

Catalog No.: A11177SP **13 Publications**

Basic Information

Observed MW

85 kDa

Calculated MW

43-84 kDa

Category

Primary antibody

Applications

WB,IP,IHC-P,ELISA

Cross-Reactivity

Human, Mouse, Rat

Background

Phosphatidylinositol 3-kinase phosphorylates the inositol ring of phosphatidylinositol at the 3-prime position. The enzyme comprises a 110 kD catalytic subunit and a regulatory subunit of either 85, 55, or 50 kD. This gene encodes the 85 kD regulatory subunit.

Phosphatidylinositol 3-kinase plays an important role in the metabolic actions of insulin, and a mutation in this gene has been associated with insulin resistance. Alternative splicing of this gene results in four transcript variants encoding different isoforms.

Recommended Dilutions

WB 1:1000 - 1:3000

IP 0.5µg-4µg antibody for
200µg-400µg extracts of
whole cells

IHC-P 1:500 - 1:2000

ELISA Recommended starting
concentration is 1 µg/mL.
Please optimize the
concentration based on
your specific assay
requirements. For high-
ratio antibody dilutions
(≥1:10000) a sequential
dilution method is
strongly recommended
to ensure measurement
accuracy.

Immunogen Information

Gene ID

5295

Swiss Prot

P27986

Immunogen

This information is considered to be commercially sensitive.

Synonyms

p85; AGM7; GRB1; IMD36; p85alpha; p85-ALPHA; PI3 Kinase p85 alpha

Product Information

Source

Rabbit

Isotype

IgG

Purification

Affinity purification

Storage

Store at -20°C. Avoid freeze / thaw cycles.

Buffer: PBS, pH 7.3, containing 50% glycerol. Preserved with Proclin300 or sodium azide.

May contain 0.05% BSA as specified on the Certificate of Analysis.

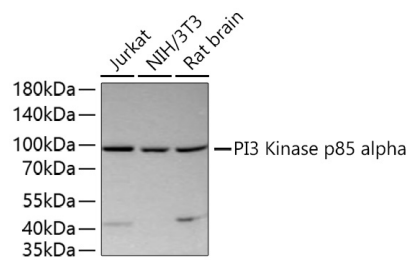
Contact

 | 400-999-6126

 | cn.market@abclonal.com.cn

 | www.abclonal.com.cn

Validation Data



Western blot analysis of various lysates using PI3 Kinase p85 alpha Rabbit pAb (A11177SP) at 1:1000 dilution incubated overnight at 4°C.
Secondary antibody: HRP-conjugated Goat anti-Rabbit IgG (H+L) (AS014) at 1:10000 dilution.
Lysates/proteins: 25 µg per lane.
Blocking buffer: 3% nonfat dry milk in TBST.
Detection: ECL Basic Kit (RM00020).
Exposure time: 5 s.