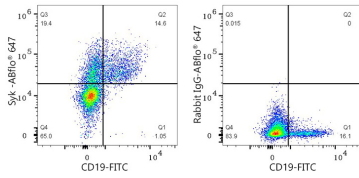




## Validation Data

---



Flow cytometry:  $1 \times 10^6$  Human PBMC were surface-stained with FITC Mouse anti-Human CD19 mAb (A22815, 5  $\mu$ l/Test) followed by intracellular staining with ABflo® 647 Rabbit anti-Human Syk mAb (A25739, 5  $\mu$ l/Test, left) or ABflo® 647 Rabbit IgG isotype control (A22070, 5  $\mu$ l/Test, right).