

Granzyme B Rabbit pAb

Catalog No.: A28337

Basic Information

Observed MW

30 kDa

Calculated MW

27 kDa

Category

Primary antibody

Applications

WB, ELISA

Cross-Reactivity

Mouse

Background

This gene encodes a member of the granzyme subfamily of proteins, part of the peptidase S1 family of serine proteases. The encoded preproprotein is secreted by natural killer (NK) cells and cytotoxic T lymphocytes (CTLs) and proteolytically processed to generate the active protease, which induces target cell apoptosis. This protein also processes cytokines and degrades extracellular matrix proteins, and these roles are implicated in chronic inflammation and wound healing. Mice lacking a functional copy of this gene exhibit impaired immune cell-mediated cytotoxicity.

Recommended Dilutions

WB 1:1000 - 1:3000

ELISA Recommended starting concentration is 1 µg/mL. Please optimize the concentration based on your specific assay requirements. For high-ratio antibody dilutions ($\geq 1:10000$) a sequential dilution method is strongly recommended to ensure measurement accuracy.

Immunogen Information

Gene ID

14939

Swiss Prot

P04187

Immunogen

Synthetic peptide. This information is considered to be commercially sensitive.

Synonyms

GZB; CCP1; Ctla1; Ctla-1; CCP-1/C11

Contact

 | 400-999-6126 | cn.market@abclonal.com.cn | www.abclonal.com.cn

Product Information

Source

Rabbit

Isotype

IgG

Purification

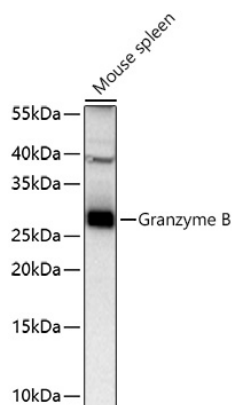
Affinity purification

Storage

Store at -20°C. Avoid freeze / thaw cycles.

Buffer: PBS with 0.09% Sodium azide, 50% glycerol, pH7.3.

Validation Data



Western blot analysis of lysates from Mouse spleen using Granzyme B Rabbit pAb (A28337) at 1:3000 dilution incubated overnight at 4°C.

Secondary antibody: HRP-conjugated Goat anti-Rabbit IgG (H+L) (AS014) at 1:10000 dilution.

Lysates/proteins: 25 µg per lane.

Blocking buffer: 3% nonfat dry milk in TBST.

Detection: ECL Basic Kit (RM00020).

Exposure time: 45 s.