

AQP10 Rabbit pAb

Catalog No.: A2888

Basic Information

Observed MW

35kDa

Calculated MW

32kDa

Category

Primary antibody

Applications

WB, ELISA

Cross-Reactivity

Human, Mouse

Background

This gene encodes a member of the aquaglyceroporin family of integral membrane proteins. Members of this family function as water-permeable channels in the epithelia of organs that absorb and excrete water. This protein was shown to function as a water-selective channel, and could also permeate neutral solutes such as glycerol and urea.

Recommended Dilutions

WB 1:200 - 1:1000

ELISA Recommended starting concentration is 1 µg/mL. Please optimize the concentration based on your specific assay requirements.

Immunogen Information

Gene ID

89872

Swiss Prot

Q96PS8

Immunogen

Recombinant protein (or fragment). This information is considered to be commercially sensitive.

Synonyms

AQPA_HUMAN; AQP10

Contact

☎ | 400-999-6126

✉ | cn.market@abclonal.com.cn

🌐 | www.abclonal.com.cn

Product Information

Source

Rabbit

Isotype

IgG

Purification

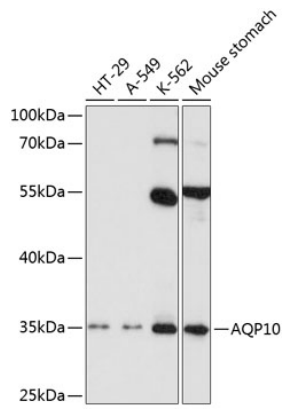
Affinity purification

Storage

Store at -20°C. Avoid freeze / thaw cycles.

Buffer: PBS containing 50% glycerol, preserved with proclin300 or sodium azide (as specified on the Certificate of Analysis), pH 7.3.

Validation Data



Western blot analysis of various lysates using AQP10 Rabbit pAb (A2888) at 1:1000 dilution.
Secondary antibody: HRP-conjugated Goat anti-Rabbit IgG (H+L) (AS014) at 1:10000 dilution.
Lysates/proteins: 25µg per lane.
Blocking buffer: 3% nonfat dry milk in TBST.
Detection: ECL Basic Kit (RM00020).
Exposure time: 90s.