

# AGTR2 Rabbit mAb

Catalog No.: A3654 **Recombinant** **2 Publications**

## Basic Information

### Observed MW

45kDa

### Calculated MW

41kDa

### Category

Primary antibody

### Applications

WB, ELISA

### Cross-Reactivity

Human, Mouse, Rat

### CloneNo number

ARC2064

## Background

The protein encoded by this gene belongs to the G-protein coupled receptor 1 family, and functions as a receptor for angiotensin II. It is an integral membrane protein that is highly expressed in fetus and in neonates, but scantily in adult tissues, except brain, adrenal medulla, and atretic ovary. This receptor has been shown to mediate programmed cell death and this apoptotic function may play an important role in developmental biology and pathophysiology. Mutations in this gene are been associated with X-linked cognitive disability. Severe Acute Respiratory Syndrome Coronavirus (SARS-CoV) and SARS-CoV-2 infection results in down-regulation of angiotensin converting enzyme-2 (ACE2) receptors, the effects of which, triggers serious inflammatory lesions in the tissues involved, primarily in the lungs. The inflammatory reaction appears to be mediated by angiotensin II derivatives, including the angiotensin AT2 receptor which has been found to be upregulated in bronchoalveolar lavage samples from Coronavirus disease 2019 (COVID19) patients.

## Recommended Dilutions

**WB** 1:1000 - 1:2000

**ELISA** Recommended starting concentration is 1 µg/mL. Please optimize the concentration based on your specific assay requirements.

## Immunogen Information

### Gene ID

186

### Swiss Prot

P50052

### Immunogen

A synthetic peptide corresponding to a sequence within amino acids 264-363 of human AGTR2 (P50052).

### Synonyms

AT2; ATGR2; MRX88; AGTR2

## Contact

☎ | 400-999-6126

✉ | [cn.market@abclonal.com.cn](mailto:cn.market@abclonal.com.cn)

🌐 | [www.abclonal.com.cn](http://www.abclonal.com.cn)

## Product Information

### Source

Rabbit

### Isotype

IgG

### Purification

Affinity purification

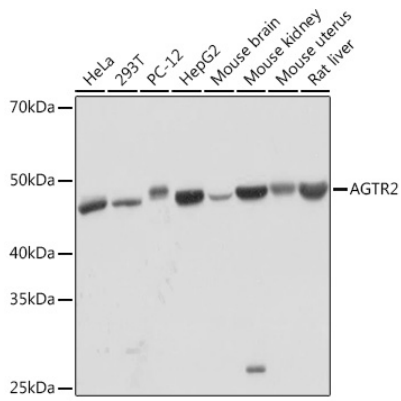
### Storage

Store at -20°C. Avoid freeze / thaw cycles.

Buffer: PBS with 0.02% sodium azide, 0.05% BSA, 50% glycerol, pH7.3.

## Validation Data

---



Western blot analysis of various lysates using AGTR2 Rabbit mAb (A3654) at 1:1000 dilution.  
Secondary antibody: HRP-conjugated Goat anti-Rabbit IgG (H+L) (AS014) at 1:10000 dilution.  
Lysates/proteins: 25µg per lane.  
Blocking buffer: 3% nonfat dry milk in TBST.  
Detection: ECL Basic Kit (RM00020).  
Exposure time: 1min.