

[KO Validated] HIF1AN/FIH1 Rabbit mAb

Catalog No.: A3701 **KO Validated** **Recombinant**

Basic Information

Observed MW

40kDa

Calculated MW

41kDa

Category

Primary antibody

Applications

ELISA, WB

Cross-Reactivity

Human

CloneNo number

ARC0826

Background

Enables several functions, including 2-oxoglutarate-dependent dioxygenase activity; NF-kappaB binding activity; and transition metal ion binding activity. Involved in several processes, including negative regulation of Notch signaling pathway; negative regulation of transcription from RNA polymerase II promoter in response to hypoxia; and protein hydroxylation. Located in cytosol; nucleoplasm; and perinuclear region of cytoplasm. Colocalizes with nucleus.

Recommended Dilutions

WB 1:500 - 1:2000

Immunogen Information

Gene ID

55662

Swiss Prot

Q9NWT6

Immunogen

A synthetic peptide corresponding to a sequence within amino acids 1-100 of human HIF1AN/FIH1 (Q9NWT6).

Synonyms

FIH1; H1

Contact

☎ | 400-999-6126

✉ | cn.market@abclonal.com.cn

🌐 | www.abclonal.com.cn

Product Information

Source

Rabbit

Isotype

IgG

Purification

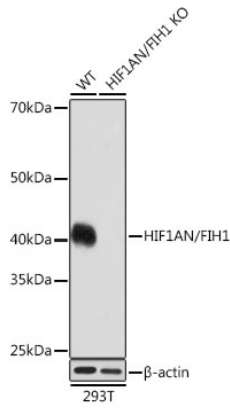
Affinity purification

Storage

Store at -20°C. Avoid freeze / thaw cycles.

Buffer: PBS with 0.02% sodium azide, 0.05% BSA, 50% glycerol, pH7.3.

Validation Data



Western blot analysis of extracts from wild type (WT) and HIF1AN/FIH1 knockout (KO) 293T cells, using HIF1AN/FIH1 antibody (A3701) at 1:1000 dilution.

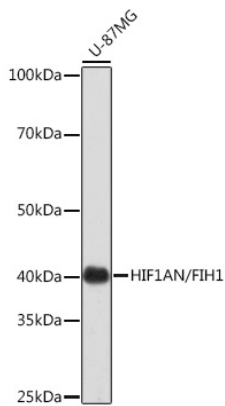
Secondary antibody: HRP Goat Anti-Rabbit IgG (H+L) (AS014) at 1:10000 dilution.

Lysates/proteins: 25 μ g per lane.

Blocking buffer: 3% nonfat dry milk in TBST.

Detection: ECL Basic Kit (RM00020).

Exposure time: 3min.



Western blot analysis of extracts of U-87MG cells, using HIF1AN/FIH1 Rabbit mAb (A3701) at 1:1000 dilution.

Secondary antibody: HRP Goat Anti-Rabbit IgG (H+L) (AS014) at 1:10000 dilution.

Lysates/proteins: 25 μ g per lane.

Blocking buffer: 3% nonfat dry milk in TBST.

Detection: ECL Basic Kit (RM00020).

Exposure time: 3min.