

# MYLK Rabbit mAb

Catalog No.: A3835 **Recombinant** **3 Publications**

## Basic Information

### Observed MW

130kDa/140kDa

### Calculated MW

211kDa

### Category

Primary antibody

### Applications

ELISA, WB

### Cross-Reactivity

Human, Rat

### CloneNo number

ARC0842

## Background

This gene, a muscle member of the immunoglobulin gene superfamily, encodes myosin light chain kinase which is a calcium/calmodulin dependent enzyme. This kinase phosphorylates myosin regulatory light chains to facilitate myosin interaction with actin filaments to produce contractile activity. This gene encodes both smooth muscle and nonmuscle isoforms. In addition, using a separate promoter in an intron in the 3' region, it encodes telokin, a small protein identical in sequence to the C-terminus of myosin light chain kinase, that is independently expressed in smooth muscle and functions to stabilize unphosphorylated myosin filaments. A pseudogene is located on the p arm of chromosome 3. Four transcript variants that produce four isoforms of the calcium/calmodulin dependent enzyme have been identified as well as two transcripts that produce two isoforms of telokin. Additional variants have been identified but lack full length transcripts.

## Recommended Dilutions

**WB** 1:500 - 1:2000

## Immunogen Information

### Gene ID

4638

### Swiss Prot

Q15746

### Immunogen

A synthetic peptide corresponding to a sequence within amino acids 1800-1900 of human MYLK (Q15746).

### Synonyms

KRP; AAT7; MLCK; MLCK1; MMIHS; MYLK1; MMIHS1; MYLK-L; smMLCK; MLCK108; MLCK210; MSTP083; MYLK

## Contact

☎ | 400-999-6126

✉ | [cn.market@abclonal.com.cn](mailto:cn.market@abclonal.com.cn)

🌐 | [www.abclonal.com.cn](http://www.abclonal.com.cn)

## Product Information

### Source

Rabbit

### Isotype

IgG

### Purification

Affinity purification

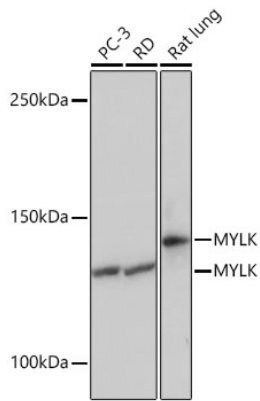
### Storage

Store at -20°C. Avoid freeze / thaw cycles.

Buffer: PBS with 0.02% sodium azide, 0.05% BSA, 50% glycerol, pH7.3.

## Validation Data

---



Western blot analysis of extracts of various cell lines, using MYLK Rabbit mAb (A3835) at 1:1000 dilution.  
Secondary antibody: HRP Goat Anti-Rabbit IgG (H+L) (AS014) at 1:10000 dilution.  
Lysates/proteins: 25 $\mu$ g per lane.  
Blocking buffer: 3% nonfat dry milk in TBST.  
Detection: ECL Basic Kit (RM00020).  
Exposure time: 1s.