

# DYNC2LI1 Rabbit pAb

Catalog No.: A4752

## Basic Information

### Observed MW

38kDa

### Calculated MW

40kDa

### Category

Primary antibody

### Applications

WB, ELISA

### Cross-Reactivity

Human, Mouse, Rat

## Background

This gene encodes a protein that is a component of the dynein-2 microtubule motor protein complex that plays a role in the retrograde transport of cargo in primary cilia via the intraflagellar transport system. This gene is ubiquitously expressed and its protein, which localizes to the axoneme and Golgi apparatus, interacts directly with the cytoplasmic dynein 2 heavy chain 1 protein to form part of the multi-protein dynein-2 complex. Mutations in this gene produce defects in the dynein-2 complex which result in several types of ciliopathy including short-rib thoracic dysplasia 15 with polydactyly (SRTD15). Alternative splicing results in multiple transcript variants encoding distinct isoforms.

## Recommended Dilutions

**WB** 1:500 - 1:2000

**ELISA** Recommended starting concentration is 1 µg/mL. Please optimize the concentration based on your specific assay requirements.

## Immunogen Information

### Gene ID

51626

### Swiss Prot

Q8TCX1

### Immunogen

Recombinant protein (or fragment). This information is considered to be commercially sensitive.

### Synonyms

LIC3; D2LIC; CGI-60; DYNC2LI1

## Contact

☎ | 400-999-6126

✉ | [cn.market@abclonal.com.cn](mailto:cn.market@abclonal.com.cn)

🌐 | [www.abclonal.com.cn](http://www.abclonal.com.cn)

## Product Information

### Source

Rabbit

### Isotype

IgG

### Purification

Affinity purification

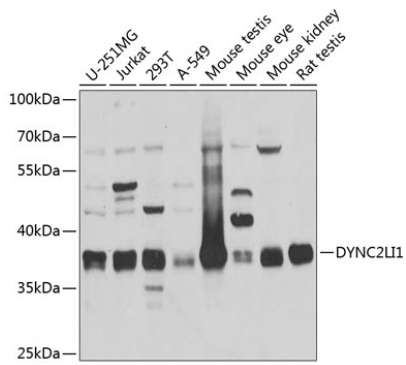
### Storage

Store at -20°C. Avoid freeze / thaw cycles.

Buffer: PBS containing 50% glycerol, preserved with proclin300 or sodium azide (as specified on the Certificate of Analysis), pH 7.3.

## Validation Data

---



Western blot analysis of various lysates using DYNC2L11 Rabbit pAb (A4752) at 1:1000 dilution. Secondary antibody: HRP-conjugated Goat anti-Rabbit IgG (H+L) (AS014) at 1:10000 dilution. Lysates/proteins: 25µg per lane. Blocking buffer: 3% nonfat dry milk in TBST. Detection: ECL Basic Kit (RM00020). Exposure time: 5s.