

RASSF6 Rabbit pAb

Catalog No.: A5187

Basic Information

Observed MW

54kDa

Calculated MW

43kDa

Category

Primary antibody

Applications

ELISA, WB

Cross-Reactivity

Mouse, Rat

Background

This gene encodes a member of the Ras-association domain family (RASSF). Members of this family form the core of a highly conserved tumor suppressor network, the Salvador-Warts-Hippo (SWH) pathway. The protein encoded by this gene is a Ras effector protein that induces apoptosis. A genomic region containing this gene has been linked to susceptibility to viral bronchiolitis. Alternative splicing results in multiple transcript variants and protein isoforms.

Recommended Dilutions

WB 1:500 - 1:2000

Immunogen Information

Gene ID

166824

Swiss Prot

Q6ZTQ3

Immunogen

Recombinant fusion protein containing a sequence corresponding to amino acids 1-303 of human RASSF6 (NP_001257320.1).

Synonyms

RASSF6

Contact

☎ | 400-999-6126

✉ | cn.market@abclonal.com.cn

🌐 | www.abclonal.com.cn

Product Information

Source

Rabbit

Isotype

IgG

Purification

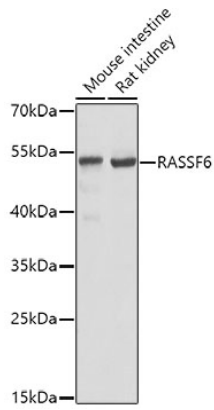
Affinity purification

Storage

Store at -20°C. Avoid freeze / thaw cycles.

Buffer: PBS with 0.02% sodium azide, 50% glycerol, pH7.3.

Validation Data



Western blot analysis of extracts of various cell lines, using RASSF6 antibody (A5187) at 1:1000 dilution.
Secondary antibody: HRP Goat Anti-Rabbit IgG (H+L) (AS014) at 1:10000 dilution.
Lysates/proteins: 25µg per lane.
Blocking buffer: 3% nonfat dry milk in TBST.
Detection: ECL Basic Kit (RM00020).
Exposure time: 15s.