

HFE2 Rabbit pAb

Catalog No.: A5348

Basic Information

Observed MW

52kDa

Calculated MW

45kDa

Category

Primary antibody

Applications

WB, ELISA

Cross-Reactivity

Mouse, Rat

Background

The product of this gene is involved in iron metabolism. It may be a component of the signaling pathway which activates hepcidin or it may act as a modulator of hepcidin expression. It could also represent the cellular receptor for hepcidin. Two uORFs in the 5' UTR negatively regulate the expression and activity of the encoded protein. Alternatively spliced transcript variants encoding different isoforms have been identified for this gene. Defects in this gene are the cause of hemochromatosis type 2A, also called juvenile hemochromatosis (JH). JH is an early-onset autosomal recessive disorder due to severe iron overload resulting in hypogonadotropic hypogonadism, hepatic fibrosis or cirrhosis and cardiomyopathy, occurring typically before age of 30.

Recommended Dilutions

WB 1:500 - 1:2000

ELISA Recommended starting concentration is 1 µg/mL. Please optimize the concentration based on your specific assay requirements.

Immunogen Information

Gene ID

148738

Swiss Prot

Q6ZVN8

Immunogen

Recombinant protein (or fragment). This information is considered to be commercially sensitive.

Synonyms

JH; HFE2; RGMC; HFE2A

Contact

☎ | 400-999-6126

✉ | cn.market@abclonal.com.cn

🌐 | www.abclonal.com.cn

Product Information

Source

Rabbit

Isotype

IgG

Purification

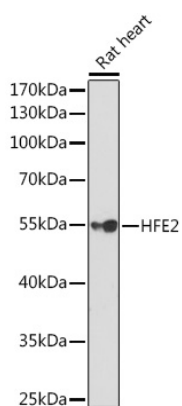
Affinity purification

Storage

Store at -20°C. Avoid freeze / thaw cycles.

Buffer: PBS with 0.02% sodium azide, 50% glycerol, pH7.3.

Validation Data



Western blot analysis of lysates from Rat heart, using HFE2 Rabbit pAb (A5348) at 1:1000 dilution.
Secondary antibody: HRP-conjugated Goat anti-Rabbit IgG (H+L) (AS014) at 1:10000 dilution.
Lysates/proteins: 25µg per lane.
Blocking buffer: 3% nonfat dry milk in TBST.
Detection: ECL Basic Kit (RM00020).
Exposure time: 90s.