

RGS20 Rabbit pAb

Catalog No.: A8167

Basic Information

Observed MW

44kDa

Calculated MW

44kDa

Category

Primary antibody

Applications

WB, ELISA

Cross-Reactivity

Human, Mouse, Rat

Background

The protein encoded by this gene belongs to the family of regulator of G protein signaling (RGS) proteins, which are regulatory and structural components of G protein-coupled receptor complexes. RGS proteins inhibit signal transduction by increasing the GTPase activity of G protein alpha subunits, thereby driving them into their inactive GDP-bound forms. This protein selectively binds to G(z)-alpha and G(alpha)-i2 subunits, and regulates their signaling activities. Alternatively spliced transcript variants encoding different isoforms have been found for this gene.

Recommended Dilutions

WB 1:500 - 1:2000

ELISA Recommended starting concentration is 1 µg/mL. Please optimize the concentration based on your specific assay requirements.

Immunogen Information

Gene ID

8601

Swiss Prot

O76081

Immunogen

Recombinant protein (or fragment). This information is considered to be commercially sensitive.

Synonyms

RGSZ1; ZGAP1; gz-GAP; g(z)GAP; RGS20

Contact

☎ | 400-999-6126

✉ | cn.market@abclonal.com.cn

🌐 | www.abclonal.com.cn

Product Information

Source

Rabbit

Isotype

IgG

Purification

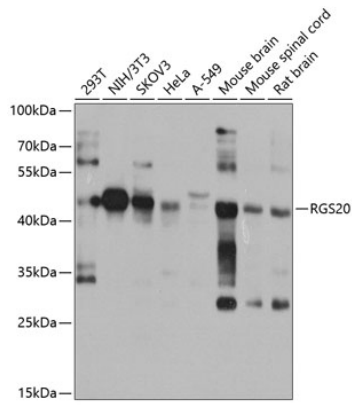
Affinity purification

Storage

Store at -20°C. Avoid freeze / thaw cycles.

Buffer: PBS containing 50% glycerol, preserved with proclin300 or sodium azide (as specified on the Certificate of Analysis), pH 7.3.

Validation Data



Western blot analysis of various lysates using RGS20 Rabbit pAb (A8167) at 1:1000 dilution.
Secondary antibody: HRP-conjugated Goat anti-Rabbit IgG (H+L) (AS014) at 1:10000 dilution.
Lysates/proteins: 25µg per lane.
Blocking buffer: 3% nonfat dry milk in TBST.
Detection: ECL Basic Kit (RM00020).
Exposure time: 15s.