

14-3-3 Theta Rabbit mAb

Catalog No.: A8936 **Recombinant** **1 Publications**

Basic Information

Observed MW

28kDa

Calculated MW

28kDa

Category

Primary antibody

Applications

ELISA, WB, IF/ICC

Cross-Reactivity

Human, Mouse, Rat

CloneNo number

ARC1358

Background

This gene product belongs to the 14-3-3 family of proteins which mediate signal transduction by binding to phosphoserine-containing proteins. This highly conserved protein family is found in both plants and mammals, and this protein is 99% identical to the mouse and rat orthologs. This gene is upregulated in patients with amyotrophic lateral sclerosis. It contains in its 5' UTR a 6 bp tandem repeat sequence which is polymorphic, however, there is no correlation between the repeat number and the disease.

Recommended Dilutions

WB	1:500 - 1:2000
IF/ICC	1:50 - 1:200

Immunogen Information

Gene ID

10971

Swiss Prot

P27348

Immunogen

A synthetic peptide corresponding to a sequence within amino acids 1-100 of human 14-3-3 Theta (P27348).

Synonyms

1C5; HS1; 14-3-3; 14-3-3 Theta

Contact

☎ | 400-999-6126

✉ | cn.market@abclonal.com.cn

🌐 | www.abclonal.com.cn

Product Information

Source

Rabbit

Isotype

IgG

Purification

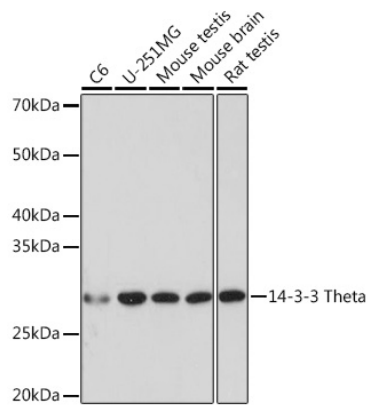
Affinity purification

Storage

Store at -20°C. Avoid freeze / thaw cycles.

Buffer: PBS with 0.02% sodium azide, 0.05% BSA, 50% glycerol, pH7.3.

Validation Data



Western blot analysis of extracts of various cell lines, using 14-3-3 Theta Rabbit mAb (A8936) at 1:1000 dilution.

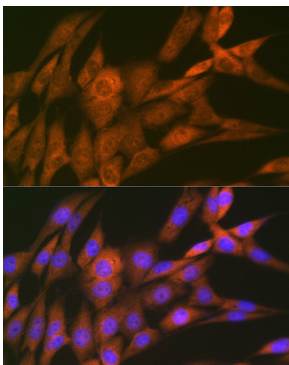
Secondary antibody: HRP Goat Anti-Rabbit IgG (H+L) (AS014) at 1:10000 dilution.

Lysates/proteins: 25µg per lane.

Blocking buffer: 3% nonfat dry milk in TBST.

Detection: ECL Basic Kit (RM00020).

Exposure time: 10s.



Immunofluorescence analysis of NIH-3T3 cells using 14-3-3 Theta Rabbit mAb (A8936) at dilution of 1:100 (40x lens). Blue: DAPI for nuclear staining.