

LINGO1 Rabbit pAb

Catalog No.: A9369

Basic Information

Observed MW

70kDa

Calculated MW

70kDa

Category

Primary antibody

Applications

ELISA, WB

Cross-Reactivity

Human, Mouse

Background

Predicted to enable epidermal growth factor receptor binding activity. Predicted to act upstream of or within generation of neurons and protein kinase B signaling. Predicted to be located in plasma membrane. Predicted to be active in extracellular matrix and extracellular space. Implicated in autosomal recessive non-syndromic intellectual disability and glaucoma.

Recommended Dilutions

WB 1:500 - 1:2000

Immunogen Information

Gene ID

84894

Swiss Prot

Q96FE5

Immunogen

Recombinant fusion protein containing a sequence corresponding to amino acids 42-240 of human LINGO1 (NP_116197.4).

Synonyms

LERN1; MRT64; LRRN6A; UNQ201; LINGO1

Contact

☎ | 400-999-6126

✉ | cn.market@abclonal.com.cn

🌐 | www.abclonal.com.cn

Product Information

Source

Rabbit

Isotype

IgG

Purification

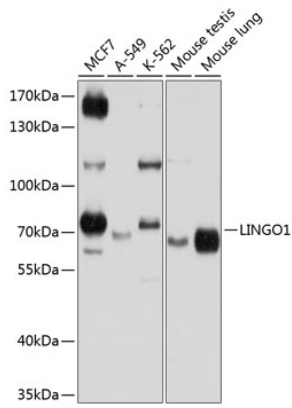
Affinity purification

Storage

Store at -20°C. Avoid freeze / thaw cycles.

Buffer: PBS with 0.02% sodium azide, 50% glycerol, pH 7.3.

Validation Data



Western blot analysis of extracts of various cell lines, using LINGO1 antibody (A9369) at 1:1000 dilution.
Secondary antibody: HRP Goat Anti-Rabbit IgG (H+L) (AS014) at 1:10000 dilution.
Lysates/proteins: 25µg per lane.
Blocking buffer: 3% nonfat dry milk in TBST.
Detection: ECL Basic Kit (RM00020).
Exposure time: 60s.