

PLA2G6 Rabbit pAb

Catalog No.: A9492

Basic Information

Observed MW

82kDa

Calculated MW

90kDa

Category

Primary antibody

Applications

ELISA, WB

Cross-Reactivity

Rat

Background

The protein encoded by this gene is an A2 phospholipase, a class of enzyme that catalyzes the release of fatty acids from phospholipids. The encoded protein may play a role in phospholipid remodelling, arachidonic acid release, leukotriene and prostaglandin synthesis, fas-mediated apoptosis, and transmembrane ion flux in glucose-stimulated B-cells. Several transcript variants encoding multiple isoforms have been described, but the full-length nature of only three of them have been determined to date.

Recommended Dilutions

WB 1:500 - 1:2000

Immunogen Information

Gene ID

8398

Swiss Prot

O60733

Immunogen

Recombinant fusion protein containing a sequence corresponding to amino acids 151-250 of human PLA2G6 (NP_003551.2).

Synonyms

GVI; PLA2; INAD1; NBIA2; iPLA2; NBIA2A; NBIA2B; PARK14; PNPLA9; Cai-PLA2; IPLA2-VIA; iPLA2beta; PLA2G6

Contact

☎ | 400-999-6126

✉ | cn.market@abclonal.com.cn

🌐 | www.abclonal.com.cn

Product Information

Source

Rabbit

Isotype

IgG

Purification

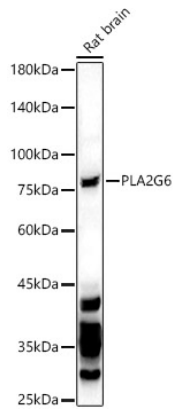
Affinity purification

Storage

Store at -20°C. Avoid freeze / thaw cycles.

Buffer: PBS with 0.02% sodium azide, 50% glycerol, pH7.3.

Validation Data



Western blot analysis of Rat brain, using PLA2G6 Rabbit pAb (A9492) at 1:1500 dilution.
Secondary antibody: HRP Goat Anti-Rabbit IgG (H+L) (AS014) at 1:10000 dilution.
Lysates/proteins: 25µg per lane.
Blocking buffer: 3% nonfat dry milk in TBST.
Detection: ECL Basic Kit (RM00020).
Exposure time: 90s.