

# Phospho-CDK1/2/3-T14 Rabbit mAb

Catalog No.: AP1138 **Recombinant**

## Basic Information

### Observed MW

34kDa

### Calculated MW

34kDa

### Category

Primary antibody

### Applications

ELISA, WB

### Cross-Reactivity

Human, Mouse, Rat

### CloneNo number

ARC1545

## Background

The protein encoded by this gene is a member of the Ser/Thr protein kinase family. This protein is a catalytic subunit of the highly conserved protein kinase complex known as M-phase promoting factor (MPF), which is essential for G1/S and G2/M phase transitions of eukaryotic cell cycle. Mitotic cyclins stably associate with this protein and function as regulatory subunits. The kinase activity of this protein is controlled by cyclin accumulation and destruction through the cell cycle. The phosphorylation and dephosphorylation of this protein also play important regulatory roles in cell cycle control. Alternatively spliced transcript variants encoding different isoforms have been found for this gene. [provided by RefSeq, Mar 2009]

## Recommended Dilutions

**WB** 1:500 - 1:1000

## Immunogen Information

### Gene ID

983/1017/1018

### Swiss Prot

P06493/P24941/Q00526

### Immunogen

A synthetic phosphorylated peptide around T14 of human CDK1/2/3CDK1 (P06493).

### Synonyms

CDC2; CDC28A; P34CDC2; Phospho-CDK1/2/3-T14

## Contact

☎ | 400-999-6126

✉ | [cn.market@abclonal.com.cn](mailto:cn.market@abclonal.com.cn)

🌐 | [www.abclonal.com.cn](http://www.abclonal.com.cn)

## Product Information

### Source

Rabbit

### Isotype

IgG

### Purification

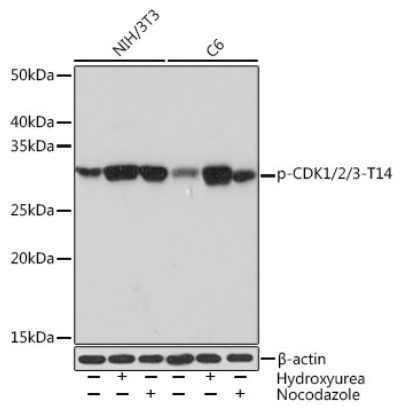
Affinity purification

### Storage

Store at -20°C. Avoid freeze / thaw cycles.

Buffer: PBS with 0.02% sodium azide, 0.05% BSA, 50% glycerol, pH7.3.

## Validation Data



Western blot analysis of various lysates using Phospho-CDK1/2/3-T14 Rabbit mAb (AP1138) at 1:1000 dilution. Both NIH/3T3 cells and C6 cells were treated by Hydroxyurea (4 Mm) at 37°C for 20 hours or treated by Nocodazole (100 ng/mL) at 37°C for 24 hours.  
Secondary antibody: HRP-conjugated Goat anti-Rabbit IgG (H+L) (AS014) at 1:10000 dilution.  
Lysates/proteins: 25µg per lane.  
Blocking buffer: 3% BSA.  
Detection: ECL Basic Kit (RM00020).  
Exposure time: 30s.