

# Rabbit anti-Human IL-8 mAb (DET)

**Catalog No.: RM17647**

## Basic Information

**Catalog No.**  
RM17647

**Catagory**  
Elisa Antibody Kit

**Application**  
ELISA

## Product Information

**Ig Type**  
Rabbit IgG

**Purification**  
Affinity purification

**Endotoxin Level**

**Storage**  
This antibody can be stored at 2°C-8°C for one month without detectable loss of activity. Antibody products are stable for twelve months from date of receipt when stored at -20°C to -80°C. Preservative-Free.


**Avoid repeated freeze-thaw cycles.**

**Formulation**  
Supplied as a 0.2um filtered solution in PBS with 0.1% Bredas MB-1, PH 7.4.

## Contact

 | [order@abclonal.com](mailto:order@abclonal.com)

 | [support@abclonal.com](mailto:support@abclonal.com)

 | [www.abclonal.com](http://www.abclonal.com)

## Background

Interleukin 8 (IL8 or chemokine (C-X-C motif) ligand 8, CXCL8) is a chemokine produced by macrophages and other cell types such as epithelial cells, airway smooth muscle cells and endothelial cells. There are many receptors on the surface membrane capable of binding IL-8, the most frequently studied types are the G protein-coupled serpentine receptors CXCR1 and CXCR2. Expression and affinity for IL-8 differs between the two receptors (CXCR1 > CXCR2). IL-8(6-77) has a 5-10-fold higher activity on neutrophil activation, IL-8(5-77) has increased activity on neutrophil activation and IL-8(7-77) has a higher affinity to receptors CXCR1 and CXCR2 as compared to IL-8(1-77), respectively.

## Immunogen Information

**Immunogen**  
Recombinant IL-8 Protein

## Cross-Reactivity

No cross-reactivity in ELISA assay with recombinant mL-4, mL-8, mL-10

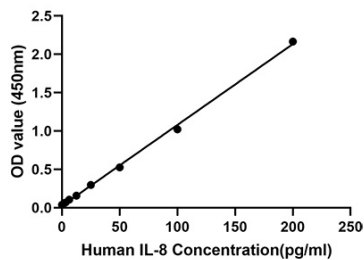
## Assay Applications

Human IL-8 Sandwich ELISA Immunoassay

	Recommended Concentration	Sample
ELISA Capture	1-4ug/mL	Rabbit anti-Human IL-8(CAP)(Cat. No.RM17646)
ELISA Detection	0.031-0.125ug/mL	Rabbit anti-Human IL-8(DET)(Cat. No.RM17647)
Standard	3.125-200pg/mL	Recombinant Human IL-8 Protein

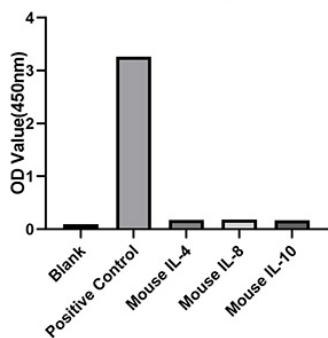
# Validation Data

### Human IL-8 ELISA Kit



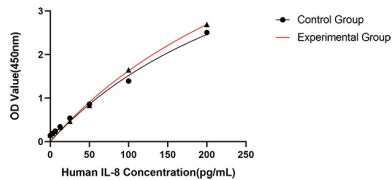
This standard curve is only for demonstration purposes. A standard curve should be generated for each assay.

### Specificity



No significant cross-reactivity or interference was observed.

### Stability



Placed at 37°C for 3 days, the stability of the standard curve all conform to CV <10%.