

Rabbit anti- Mouse CXCL1/KC mAb

Catalog No.: RMK0441

Basic Information

Catalog No.
RMK0441

Catagory
Elisa Antibody Kit

Application
ELISA, Multiplex

Product Information

Ig Type
Rabbit IgG

Purification
Affinity purification

Endotoxin Level

Storage
Store at -20°C.
Avoid repeated freeze-thaw cycles.

Formulation
Supplied as a 0.2um filtered solution in PBS with 0.05%ProClin 300,PH 7.4.

Contact

 | order@abclonal.com

 | support@abclonal.com

 | www.abclonal.com

Background

This gene encodes a protein that is a member of the CXC subfamily of chemokines. Chemokines, which recruit and activate leukocytes, are classified by function (inflammatory or homeostatic) or by structure. This secretory protein is proposed to bind the G-protein coupled receptor chemokine (C-X-C motif) receptor 2 to recruit neutrophils. In mouse, deficiency of this gene is associated with colitis and with defects in immune cell recruitment to the lung.

Immunogen Information

Immunogen
Recombinant Mouse CXCL1/KC

Cross-Reactivity

/

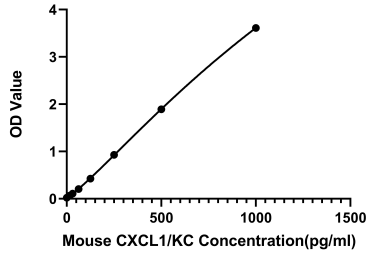
Assay Applications

Mouse CXCL1/KC ELISA/Multiplex

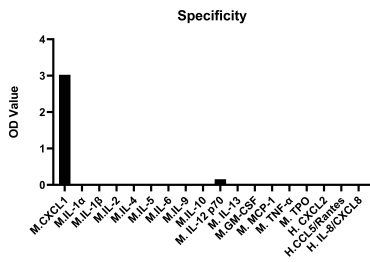
		Recommended Concentration	Sample
ELISA	Capture	0.5-2ug/mL	Rabbit anti-Mouse CXCL1/KC mAb(Cat. No.RMK0441)
	Detection	0.0125-0.05ug/mL	Rabbit anti-Mouse CXCL1/KC mAb (Cat. No. RMK0442)
	Standard	15.63-1000pg/mL	Recombinant Mouse CXCL1/KC

Multiplex	Capture	3-20ug/mL	Rabbit anti-Mouse CXCL1/KC mAb(Cat. No.RMK0449)
	Detection	0.017-2ug/mL	Rabbit anti-Mouse CXCL1/KC mAb(Cat. No.RMK0441)
	Standard	6.86-5000pg/mL	Recombinant Mouse CXCL1/KC

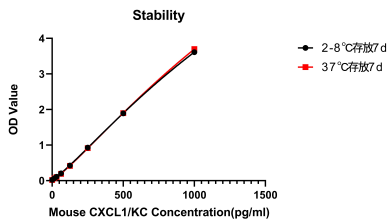
Validation Data



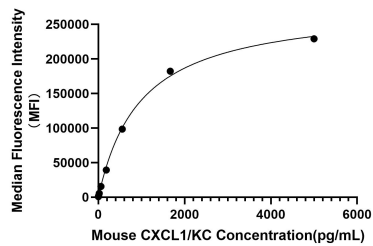
This standard curve is only for demonstration purposes. A standard curve should be generated for each assay.



No significant cross-reactivity or interference was observed.



Placed at 37°C for 7 days, the stability of the standard curve all conform to CV <10%.



This standard curve is only for demonstration purposes. A standard curve should be generated for each assay.